

Product datasheet for PH306588

PDE1B (NM_000924) Human Mass Spec Standard

Product data:

Product Type:	Mass Spec Standards
Description:	PDE1B MS Standard C13 and N15-labeled recombinant protein (NP_000915)
Species:	Human
Expression Host:	HEK293
Expression cDNA Clone or AA Sequence:	RC206588
Predicted MW:	61.4 kDa
Protein Sequence:	>RC206588 protein sequence Red=Cloning site Green=Tags(s)

MELSPRSPPEMLEESDCPSPLELKSAPSKKMWIKLRSLRLRYMVKQLENGEINIEELKKNLEYTASLLEAV
YIDETRQILDTEDELQELRSDAVPSEVRDWLASTFTQQARAKGRRAEKPKFRSIVHAVQAGIFVERMFR
RTYTSVGPSTAVLNCLKNLDLWCFDVFSLNQAADHALRTIVFELLTRHNLISRFKIPTVFLMSFLDA
LETGYGKYKNPYHNQIHAADVDTVHCFLLRTGMVHCLSEIELLAIIFAAAIDHYEHTGTNSFHIQTKS
ECAIVYNDRSVLENHHISSVFRMLQDDEMNIIFINLTKDEFVELRALVIEMVLATDMSCHFQQVKTMTAL
QQLERIDKPKALSLLLHAADISHPTKQWLVHSRWTKALMEEFFRQGDKEAELGLPFSPLCDRTSTLVAQS
QIGFIDFIVEPTFSVLTDVAEKSVQPLAEDSKSKNQPSFQWRQPSLDVEVGDPNPDVVSFRSTWVKRIQ
ENKQKWKERAASGITNQMSIDELSPCEEEAPPSPAEDHNQNGNLD

TRTRPLEQKLISEEDLAANDILDYKDDDDKV

Tag:	C-Myc/DDK
Purity:	> 80% as determined by SDS-PAGE and Coomassie blue staining
Concentration:	>0.05 µg/µL as determined by microplate BCA method
Labeling Method:	Labeled with [U- 13C6, 15N4]-L-Arginine and [U- 13C6, 15N2]-L-Lysine
Buffer:	25 mM Tris-HCl, 100 mM glycine, pH 7.3
Storage:	Store at -80°C. Avoid repeated freeze-thaw cycles.
Stability:	Stable for 3 months from receipt of products under proper storage and handling conditions.
RefSeq:	<u>NP_000915</u>
RefSeq Size:	3463
RefSeq ORF:	1608



[View online »](#)

Synonyms: HEL-S-79p; PDE1B1; PDES1B

Locus ID: 5153

UniProt ID: [Q01064](#), [A0A024RB59](#)

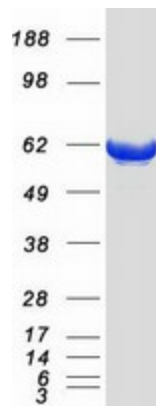
Cytogenetics: 12q13.2

Summary: The protein encoded by this gene belongs to the cyclic nucleotide phosphodiesterase (PDE) family, and PDE1 subfamily. Members of the PDE1 family are calmodulin-dependent PDEs that are stimulated by a calcium-calmodulin complex. This PDE has dual-specificity for the second messengers, cAMP and cGMP, with a preference for cGMP as a substrate. cAMP and cGMP function as key regulators of many important physiological processes. Alternatively spliced transcript variants encoding different isoforms have been described for this gene. [provided by RefSeq, Jul 2011]

Protein Families: Druggable Genome

Protein Pathways: Calcium signaling pathway, Progesterone-mediated oocyte maturation, Purine metabolism

Product images:



Coomassie blue staining of purified PDE1B protein (Cat# [TP306588]). The protein was produced from HEK293T cells transfected with PDE1B cDNA clone (Cat# [RC206588]) using MegaTran 2.0 (Cat# [TT210002]).