

## Product datasheet for PH306584

### Pancreatic Polypeptide (PPY) (NM\_002722) Human Mass Spec Standard

#### Product data:

Product Type:	Mass Spec Standards
Description:	PPY MS Standard C13 and N15-labeled recombinant protein (NP_002713)
Species:	Human
Expression Host:	HEK293
Expression cDNA Clone or AA Sequence:	RC206584
Predicted MW:	10.4 kDa
Protein Sequence:	>RC206584 protein sequence Red=Cloning site Green=Tags(s)  MAAARLCLSLLLLSTCVALLLQPLLGAQGAPLEPVYPGDNATPEQMAQYAADLRRYINMLTRPRYGKRHK EDTLAFSEWGSPhAAVPRELSPLDL  TRTRPLEQKLISEEDLAANDILDYKDDDDKV
Tag:	C-Myc/DDK
Purity:	> 80% as determined by SDS-PAGE and Coomassie blue staining
Concentration:	>0.05 µg/µL as determined by microplate BCA method
Labeling Method:	Labeled with [U- 13C6, 15N4]-L-Arginine and [U- 13C6, 15N2]-L-Lysine
Buffer:	25 mM Tris-HCl, 100 mM glycine, pH 7.3
Storage:	Store at -80°C. Avoid repeated freeze-thaw cycles.
Stability:	Stable for 3 months from receipt of products under proper storage and handling conditions.
RefSeq:	<a href="#">NP_002713</a>
RefSeq Size:	457
RefSeq ORF:	285
Synonyms:	PNP; PP
Locus ID:	5539
UniProt ID:	<a href="#">P01298</a>
Cytogenetics:	17q21.31



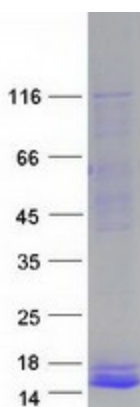
[View online »](#)

**Summary:**

This gene encodes a member of the neuropeptide Y (NPY) family of peptides. The encoded 95 aa preproprotein is synthesized in the pancreatic islets of Langerhans and proteolytically processed to generate two peptide products. These products include the active pancreatic hormone of 36 aa and an icosapeptide of unknown function. This hormone acts as a regulator of pancreatic and gastrointestinal functions and may be important in the regulation of food intake. Plasma level of this hormone has been shown to be reduced in conditions associated with increased food intake and elevated in anorexia nervosa. In addition, infusion of this hormone in obese rodents has shown to decrease weight gain. Alternative splicing results in multiple transcript variants, at least one of which encodes an isoform that is proteolytically processed. [provided by RefSeq, Jan 2016]

**Protein Families:**

Secreted Protein

**Product images:**

Coomassie blue staining of purified PPY protein (Cat# [TP306584]). The protein was produced from HEK293T cells transfected with PPY cDNA clone (Cat# [RC206584]) using MegaTran 2.0 (Cat# [TT210002]).