

## Product datasheet for PH306583

### MAPK11 (NM\_002751) Human Mass Spec Standard

#### Product data:

Product Type:	Mass Spec Standards
Description:	MAPK11 MS Standard C13 and N15-labeled recombinant protein (NP_002742)
Species:	Human
Expression Host:	HEK293
Expression cDNA Clone or AA Sequence:	RC206583
Predicted MW:	41.4 kDa
Protein Sequence:	>RC206583 protein sequence Red=Cloning site Green=Tags(s)
	MSGPRAGFYRQELNKTVWEVPQRLQGLRPVGSAYDARLRQKVAVKCLSRPFQSLIHARTYR ELRLLKHLKHENVIGLLDVFTPATSIEDFSEVYLVTTLMGADLNNIVKQALSDHVFLLVYQLLRGLKY IHSAGIIHRDLKPSNVAVNEDCELRIIDFGLARQADEEMTGYVATRWYRAPEIMLNMMHYNQTVDIWSVG CIMAELLQGKALFPGSDYIDQLKRIMEVVGTPSPEVLAKISSEHARTYIQSLPPMPQKDLSSIFRANPL AIDLLGRMLVLDSDQRVSAAEALAHAYFSQYHDPEDPEAPEPYDESVEAKERTLEEWKELTYQEVLSFKP PEPPKPPGSLEIEQ
	TRTRPLEQKLISEEDLAANDILDYKDDDDKV
Tag:	C-Myc/DDK
Purity:	> 80% as determined by SDS-PAGE and Coomassie blue staining
Concentration:	>0.05 µg/µL as determined by microplate BCA method
Labeling Method:	Labeled with [U- <sup>13</sup> C <sub>6</sub> , <sup>15</sup> N <sub>4</sub> ]-L-Arginine and [U- <sup>13</sup> C <sub>6</sub> , <sup>15</sup> N <sub>2</sub> ]-L-Lysine
Buffer:	25 mM Tris-HCl, 100 mM glycine, pH 7.3
Storage:	Store at -80°C. Avoid repeated freeze-thaw cycles.
Stability:	Stable for 3 months from receipt of products under proper storage and handling conditions.
RefSeq:	<u>NP_002742</u>
RefSeq Size:	2463
RefSeq ORF:	1092
Synonyms:	p38-2; P38B; p38Beta; P38BETA2; PRKM11; SAPK2; SAPK2B
Locus ID:	5600



[View online »](#)

UniProt ID: [Q15759](#)

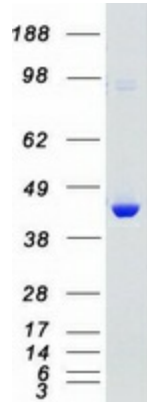
Cytogenetics: 22q13.33

**Summary:** This gene encodes a member of a family of protein kinases that are involved in the integration of biochemical signals for a wide variety of cellular processes, including cell proliferation, differentiation, transcriptional regulation, and development. The encoded protein can be activated by proinflammatory cytokines and environmental stresses through phosphorylation by mitogen activated protein kinase kinases (MKKs). Alternative splicing results in multiple transcript variants. [provided by RefSeq, Mar 2014]

**Protein Families:** Druggable Genome, Protein Kinase

**Protein Pathways:** Amyotrophic lateral sclerosis (ALS), Epithelial cell signaling in Helicobacter pylori infection, Fc epsilon RI signaling pathway, GnRH signaling pathway, Leukocyte transendothelial migration, MAPK signaling pathway, Neurotrophin signaling pathway, NOD-like receptor signaling pathway, Progesterone-mediated oocyte maturation, RIG-I-like receptor signaling pathway, T cell receptor signaling pathway, Toll-like receptor signaling pathway, VEGF signaling pathway

### Product images:



Coomassie blue staining of purified MAPK11 protein (Cat# [TP306583]). The protein was produced from HEK293T cells transfected with MAPK11 cDNA clone (Cat# [RC206583]) using MegaTran 2.0 (Cat# [TT210002]).