

Product datasheet for PH306579

Exodus 2 (CCL21) (NM_002989) Human Mass Spec Standard

Product data:

Product Type:	Mass Spec Standards
Description:	CCL21 MS Standard C13 and N15-labeled recombinant protein (NP_002980)
Species:	Human
Expression Host:	HEK293
Expression cDNA Clone or AA Sequence:	RC206579
Predicted MW:	14.6 kDa
Protein Sequence:	>RC206579 protein sequence Red=Cloning site Green=Tags(s) MAQSLALSLILVLAFGIPRTQGSDDGGAQDCCLKYSQRKIPAKVVRYSYRKQEPSLGCSIPAILFLPRKRS QAELCADPKELWVQLMQHLDKTPSPQKPAQGCRKDRGASKTGKKGKSGKCKRTERSQTPKGP TRTRPLEQKLISEEDLAANDILDYKDDDDKV
Tag:	C-Myc/DDK
Purity:	> 80% as determined by SDS-PAGE and Coomassie blue staining
Concentration:	>0.05 µg/µL as determined by microplate BCA method
Labeling Method:	Labeled with [U- 13C6, 15N4]-L-Arginine and [U- 13C6, 15N2]-L-Lysine
Buffer:	25 mM Tris-HCl, 100 mM glycine, pH 7.3
Storage:	Store at -80°C. Avoid repeated freeze-thaw cycles.
Stability:	Stable for 3 months from receipt of products under proper storage and handling conditions.
RefSeq:	NP_002980
RefSeq Size:	913
RefSeq ORF:	402
Synonyms:	6Ckine; CKb9; ECL; SCYA21; SLC; TCA4
Locus ID:	6366
UniProt ID:	O00585 , Q6ICR7
Cytogenetics:	9p13.3



[View online »](#)

Summary:

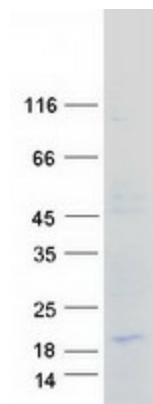
This antimicrobial gene is one of several CC cytokine genes clustered on the p-arm of chromosome 9. Cytokines are a family of secreted proteins involved in immunoregulatory and inflammatory processes. The CC cytokines are proteins characterized by two adjacent cysteines. Similar to other chemokines the protein encoded by this gene inhibits hemopoiesis and stimulates chemotaxis. This protein is chemotactic in vitro for thymocytes and activated T cells, but not for B cells, macrophages, or neutrophils. The cytokine encoded by this gene may also play a role in mediating homing of lymphocytes to secondary lymphoid organs. It is a high affinity functional ligand for chemokine receptor 7 that is expressed on T and B lymphocytes and a known receptor for another member of the cytokine family (small inducible cytokine A19). [provided by RefSeq, Sep 2014]

Protein Families:

Druggable Genome, Secreted Protein

Protein Pathways:

Chemokine signaling pathway, Cytokine-cytokine receptor interaction

Product images:

Coomassie blue staining of purified CCL21 protein (Cat# [TP306579]). The protein was produced from HEK293T cells transfected with CCL21 cDNA clone (Cat# [RC206579]) using MegaTran 2.0 (Cat# [TT210002]).