

Product datasheet for PH306578

MDC (CCL22) (NM_002990) Human Mass Spec Standard

Product data:

| | |
|---------------------------------------|---|
| Product Type: | Mass Spec Standards |
| Description: | CCL22 MS Standard C13 and N15-labeled recombinant protein (NP_002981) |
| Species: | Human |
| Expression Host: | HEK293 |
| Expression cDNA Clone or AA Sequence: | RC206578 |
| Predicted MW: | 10.6 kDa |
| Protein Sequence: | >RC206578 protein sequence Red=Cloning site Green=Tags(s) MARLQTALLVVLVLLAVALQATEAGPYGANMEDSVCCRDRYVRYRLPLRVVKHFYWTSDSCPRPGVVLLTF RDKEICADPRVPWVKMILNKLSQ TRTRPLEQKLISEEDLAANDILDYKDDDDKV |
| Tag: | C-Myc/DDK |
| Purity: | > 80% as determined by SDS-PAGE and Coomassie blue staining |
| Concentration: | >0.05 µg/µL as determined by microplate BCA method |
| Labeling Method: | Labeled with [U- 13C6, 15N4]-L-Arginine and [U- 13C6, 15N2]-L-Lysine |
| Buffer: | 25 mM Tris-HCl, 100 mM glycine, pH 7.3 |
| Storage: | Store at -80°C. Avoid repeated freeze-thaw cycles. |
| Stability: | Stable for 3 months from receipt of products under proper storage and handling conditions. |
| RefSeq: | NP_002981 |
| RefSeq Size: | 2933 |
| RefSeq ORF: | 279 |
| Synonyms: | A-152E5.1; ABCD-1; DC/B-CK; MDC; SCYA22; STCP-1 |
| Locus ID: | 6367 |
| UniProt ID: | O00626 |
| Cytogenetics: | 16q21 |



[View online »](#)

Summary:

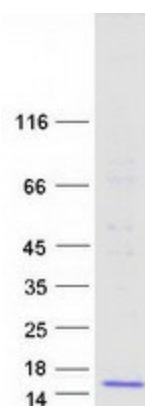
This antimicrobial gene is one of several Cys-Cys (CC) cytokine genes clustered on the q arm of chromosome 16. Cytokines are a family of secreted proteins involved in immunoregulatory and inflammatory processes. The CC cytokines are proteins characterized by two adjacent cysteines. The cytokine encoded by this gene displays chemotactic activity for monocytes, dendritic cells, natural killer cells and for chronically activated T lymphocytes. It also displays a mild activity for primary activated T lymphocytes and has no chemoattractant activity for neutrophils, eosinophils and resting T lymphocytes. The product of this gene binds to chemokine receptor CCR4. This chemokine may play a role in the trafficking of activated T lymphocytes to inflammatory sites and other aspects of activated T lymphocyte physiology. [provided by RefSeq, Sep 2014]

Protein Families:

Druggable Genome, Secreted Protein, Transmembrane

Protein Pathways:

Chemokine signaling pathway, Cytokine-cytokine receptor interaction

Product images:

Coomassie blue staining of purified CCL22 protein (Cat# [TP306578]). The protein was produced from HEK293T cells transfected with CCL22 cDNA clone (Cat# [RC206578]) using MegaTran 2.0 (Cat# [TT210002]).