

## Product datasheet for PH306569

### Myosin (MYL4) (NM\_001002841) Human Mass Spec Standard

#### Product data:

Product Type:	Mass Spec Standards
Description:	MYL4 MS Standard C13 and N15-labeled recombinant protein (NP_001002841)
Species:	Human
Expression Host:	HEK293
Expression cDNA Clone or AA Sequence:	RC206569
Predicted MW:	21.6 kDa
Protein Sequence:	>RC206569 protein sequence Red=Cloning site Green=Tags(s)  MAPKKPEPKKEAAKPAPAPAPAPAPAPAPEAPKEPAFDPKSVKIDFTADQIEEFKEAFSLFDRTPTGE MKITYGQCGDVLRALGQNPTNAEVLRLVGLGPKPEEMNVKMLDFETFLPILQHISRNKEQGTYYEDFVEGLR VFDKESNGTVMGAELRHVLAATLGEKMTEAEVEQLLAGQEDANGCINYEAFVKHIMSG  TRTRPLEQKLISEEDLAANDILDYKDDDDKV
Tag:	C-Myc/DDK
Purity:	> 80% as determined by SDS-PAGE and Coomassie blue staining
Concentration:	>0.05 µg/µL as determined by microplate BCA method
Labeling Method:	Labeled with [U- <sup>13</sup> C <sub>6</sub> , <sup>15</sup> N <sub>4</sub> ]-L-Arginine and [U- <sup>13</sup> C <sub>6</sub> , <sup>15</sup> N <sub>2</sub> ]-L-Lysine
Buffer:	25 mM Tris-HCl, 100 mM glycine, pH 7.3
Storage:	Store at -80°C. Avoid repeated freeze-thaw cycles.
Stability:	Stable for 3 months from receipt of products under proper storage and handling conditions.
RefSeq:	<a href="#">NP_001002841</a>
RefSeq Size:	934
RefSeq ORF:	591
Synonyms:	ALC1; AMLC; GT1; PRO1957
Locus ID:	4635
UniProt ID:	<a href="#">P12829</a>

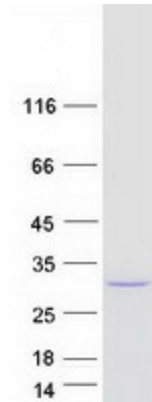


[View online »](#)

Cytogenetics: 17q21.32

**Summary:** Myosin is a hexameric ATPase cellular motor protein. It is composed of two myosin heavy chains, two nonphosphorylatable myosin alkali light chains, and two phosphorylatable myosin regulatory light chains. This gene encodes a myosin alkali light chain that is found in embryonic muscle and adult atria. Two alternatively spliced transcript variants encoding the same protein have been found for this gene. [provided by RefSeq, Jul 2008]

**Product images:**



Coomassie blue staining of purified MYL4 protein (Cat# [TP306569]). The protein was produced from HEK293T cells transfected with MYL4 cDNA clone (Cat# [RC206569]) using MegaTran 2.0 (Cat# [TT210002]).