

## Product datasheet for PH306565

### ARSB (NM\_198709) Human Mass Spec Standard

#### Product data:

Product Type:	Mass Spec Standards
Description:	ARSB MS Standard C13 and N15-labeled recombinant protein (NP_942002)
Species:	Human
Expression Host:	HEK293
Expression cDNA Clone or AA Sequence:	RC206565
Predicted MW:	46 kDa
Protein Sequence:	>RC206565 protein sequence Red=Cloning site Green=Tags(s)

MGRGAASLPRGPGRRLLL PVVLP LLLLLL APPGSGAGASRPHLVFL LADDL GWNDVGFHGSRI RTP  
HLDALAAGVLLDNYTQPLCTPSRSQLLTGRYQIRTGLQHQIIWPCQPSCVPLDEKLLPQLLKEAGYTT  
HVMGKWHLGMYRKECLPTRRGFDYFGYLLGSEDIYSHERCTLIDALNVTRCALDFRDGEEVATGYKNMY  
STNIFTKRAIALITNHPPEKPLFLYLALQSVHEPLQVPEEYLPYDFIQDKNRHHYAGMVSMLMDEAVGNV  
TAALKSSGLWNNTVFI FSTDNGGQTLAGGNNWPLRGRKWSLWEGGVRGVGFVASPLLKQKGVKNRELIHI  
SDWLPTLVKLARGHTNGTKPLDGFVWKTISEGSPSPRIELLNIDPNFV DSSPYWPECSLLL

TRTRPLEQKLI SEEDLAANDILDYKDDDDKV

Tag:	C-Myc/DDK
Purity:	> 80% as determined by SDS-PAGE and Coomassie blue staining
Concentration:	>0.05 µg/µL as determined by microplate BCA method
Labeling Method:	Labeled with [U- <sup>13</sup> C <sub>6</sub> , <sup>15</sup> N <sub>4</sub> ]-L-Arginine and [U- <sup>13</sup> C <sub>6</sub> , <sup>15</sup> N <sub>2</sub> ]-L-Lysine
Buffer:	25 mM Tris-HCl, 100 mM glycine, pH 7.3
Storage:	Store at -80°C. Avoid repeated freeze-thaw cycles.
Stability:	Stable for 3 months from receipt of products under proper storage and handling conditions.
RefSeq:	<u><a href="#">NP_942002</a></u>
RefSeq Size:	2172
RefSeq ORF:	1239
Synonyms:	ASB; G4S; MPS6
Locus ID:	411



[View online »](#)

UniProt ID: [P15848](#), [A8K4A0](#)

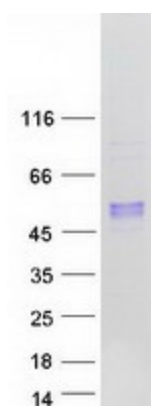
Cytogenetics: 5q14.1

**Summary:** Arylsulfatase B encoded by this gene belongs to the sulfatase family. The arylsulfatase B homodimer hydrolyzes sulfate groups of N-Acetyl-D-galactosamine, chondroitin sulfate, and dermatan sulfate. The protein is targeted to the lysosome. Mucopolysaccharidosis type VI is an autosomal recessive lysosomal storage disorder resulting from a deficiency of arylsulfatase B. Two alternatively spliced transcript variants encoding distinct isoforms have been found for this gene. [provided by RefSeq, Dec 2016]

**Protein Families:** Druggable Genome

**Protein Pathways:** Glycosaminoglycan degradation, Lysosome, Metabolic pathways

### Product images:



Coomassie blue staining of purified ARSB protein (Cat# [TP306565]). The protein was produced from HEK293T cells transfected with ARSB cDNA clone (Cat# [RC206565]) using MegaTran 2.0 (Cat# [TT210002]).