

## Product datasheet for PH306561

### CETP (NM\_000078) Human Mass Spec Standard

#### Product data:

Product Type:	Mass Spec Standards
Description:	CETP MS Standard C13 and N15-labeled recombinant protein (NP_000069)
Species:	Human
Expression Host:	HEK293
Expression cDNA Clone or AA Sequence:	RC206561
Predicted MW:	54.8 kDa
Protein Sequence:	>RC206561 protein sequence Red=Cloning site Green=Tags(s)

MLAATVLTALLGNAHACSKGTSHEAGIVCRITKPALLVLNHETAKVIQTAQFRASYPDITGEKAMMLLGG  
QVKYGLHNIQISHLSIASSQVELVEAKSIDVSIQNVSVVFKGTLKYGYTTAWWLGIDQSIDFEIDSAIDL  
QINTQLTCDSGRVRTDAPDCYLSFHKLLHLQGEREPGWIKQLFTNFISFTLKLVLKQGICKEINVISNI  
MADFVQTRAASILSDGDIGVDISLTGDPVITASYLESHHKGHFIYKNVSEDLPLPTFSPTLLGDSRMLYF  
WFSERVFHSLAKVAFQDGRMLSLMGDEFKAVLETWGFNTNQEIFQEVVGGFPSQAQVTVHCLKMPKISC  
QNKGVVNVSSVMVKFLFPRPDQQHVSVAITFEEDIVTTVQASYSKKKFLSLLDFQITPKTVSNL TESSSE  
SIQSFLQSMITAVGIPEVMSRLEVVF TALMNSKGVSLFDIINPEIITRDGFLLQLMDFGFPEHLLVDFLQ  
SLS

TRTRPLEQKLI SEEDLAANDILDYKDDDDKV

Tag:	C-Myc/DDK
Purity:	> 80% as determined by SDS-PAGE and Coomassie blue staining
Concentration:	>0.05 µg/µL as determined by microplate BCA method
Labeling Method:	Labeled with [U- 13C6, 15N4]-L-Arginine and [U- 13C6, 15N2]-L-Lysine
Buffer:	25 mM Tris-HCl, 100 mM glycine, pH 7.3
Storage:	Store at -80°C. Avoid repeated freeze-thaw cycles.
Stability:	Stable for 3 months from receipt of products under proper storage and handling conditions.
RefSeq:	<a href="#">NP_000069</a>
RefSeq Size:	1717
RefSeq ORF:	1479



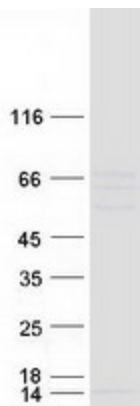
[View online »](#)

**Synonyms:** BPIFF; HDLCQ10  
**Locus ID:** 1071  
**UniProt ID:** [P11597](#), [A0A0S2Z3F6](#)  
**Cytogenetics:** 16q13

**Summary:** The protein encoded by this gene is found in plasma, where it is involved in the transfer of cholesteryl ester from high density lipoprotein (HDL) to other lipoproteins. Defects in this gene are a cause of hyperalphalipoproteinemia 1 (HALP1). Two transcript variants encoding different isoforms have been found for this gene. [provided by RefSeq, Oct 2013]

**Protein Families:** Druggable Genome, Secreted Protein

### Product images:



Coomassie blue staining of purified CETP protein (Cat# [TP306561]). The protein was produced from HEK293T cells transfected with CETP cDNA clone (Cat# [RC206561]) using MegaTran 2.0 (Cat# [TT210002]).