

Product datasheet for PH306558

HSD17B3 (NM_000197) Human Mass Spec Standard

Product data:

Product Type:	Mass Spec Standards
Description:	HSD17B3 MS Standard C13 and N15-labeled recombinant protein (NP_000188)
Species:	Human
Expression Host:	HEK293
Expression cDNA Clone or AA Sequence:	RC206558
Predicted MW:	34.5 kDa
Protein Sequence:	>RC206558 protein sequence Red=Cloning site Green=Tags(s) MGDVLEQFFILTGLLVCLACLAKCVRFSRCVLLNYWVLPKSFRLSMGQWAVITGAGDGIGKAYSFELAK RGLNVVLSRTLEKLEAIATEIERTTGRSVKIIQADFTKDDIYEHKEKLAGLEIGILVNNVGMPLNLLP SHFLNAPDEIQSLIHCNITSVVKMTQLILKHMSRQKGLILNISSGIALFPWPLYSMYSASKAFVCAFSK ALQEEYKAKEVIIQVLTYPYAVSTAMTKYLNNTVITKTADEFVKESLNYVTIGGETCGCLAHEILAGFLSL IPAWAFYSGAFQRLLLTHYVAYLKLNTKVR TRTRPLEQKLISEEDLAANDILDYKDDDDKV
Tag:	C-Myc/DDK
Purity:	> 80% as determined by SDS-PAGE and Coomassie blue staining
Concentration:	>0.05 µg/µL as determined by microplate BCA method
Labeling Method:	Labeled with [U- ¹³ C ₆ , ¹⁵ N ₄]-L-Arginine and [U- ¹³ C ₆ , ¹⁵ N ₂]-L-Lysine
Buffer:	25 mM Tris-HCl, 100 mM glycine, pH 7.3
Storage:	Store at -80°C. Avoid repeated freeze-thaw cycles.
Stability:	Stable for 3 months from receipt of products under proper storage and handling conditions.
RefSeq:	NP_000188
RefSeq Size:	1134
RefSeq ORF:	930
Synonyms:	EDH17B3; SDR12C2
Locus ID:	3293



[View online »](#)

UniProt ID: [P37058](#), [Q6FH62](#), [G5E9S2](#)

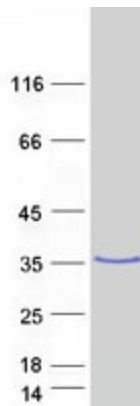
Cytogenetics: 9q22.32

Summary: This isoform of 17 beta-hydroxysteroid dehydrogenase is expressed predominantly in the testis and catalyzes the conversion of androstenedione to testosterone. It preferentially uses NADP as cofactor. Deficiency can result in male pseudohermaphroditism with gynecomastia. [provided by RefSeq, Jul 2008]

Protein Families: Druggable Genome, Transmembrane

Protein Pathways: Androgen and estrogen metabolism, Metabolic pathways

Product images:



Coomassie blue staining of purified HSD17B3 protein (Cat# [TP306558]). The protein was produced from HEK293T cells transfected with HSD17B3 cDNA clone (Cat# [RC206558]) using MegaTran 2.0 (Cat# [TT210002]).