

Product datasheet for PH306552

CART (CARTPT) (NM_004291) Human Mass Spec Standard

Product data:

Product Type:	Mass Spec Standards
Description:	CARTPT MS Standard C13 and N15-labeled recombinant protein (NP_004282)
Species:	Human
Expression Host:	HEK293
Expression cDNA Clone or AA Sequence:	RC206552
Predicted MW:	12.8 kDa
Protein Sequence:	>RC206552 protein sequence Red=Cloning site Green=Tags(s) MESSRVLLPLLGAALLLMLPLLGTRAQEDAELQPRALDIYSAVDDASHEKELIEALQEVLLKCLKSRVP IYEKKGQVPMCDAGEQCAVRKGARIGKLCDCPRGTSCNSFLLKCL TRTRPLEQKLISEEDLAANDILDYKDDDDKV
Tag:	C-Myc/DDK
Purity:	> 80% as determined by SDS-PAGE and Coomassie blue staining
Concentration:	>0.05 µg/µL as determined by microplate BCA method
Labeling Method:	Labeled with [U- 13C6, 15N4]-L-Arginine and [U- 13C6, 15N2]-L-Lysine
Buffer:	25 mM Tris-HCl, 100 mM glycine, pH 7.3
Storage:	Store at -80°C. Avoid repeated freeze-thaw cycles.
Stability:	Stable for 3 months from receipt of products under proper storage and handling conditions.
RefSeq:	NP_004282
RefSeq Size:	933
RefSeq ORF:	348
Synonyms:	CART
Locus ID:	9607
UniProt ID:	Q16568
Cytogenetics:	5q13.2



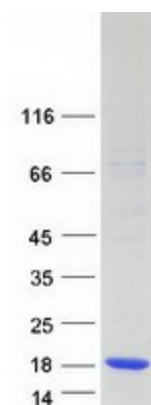
[View online »](#)

Summary:

This gene encodes a preproprotein that is proteolytically processed to generate multiple biologically active peptides. These peptides play a role in appetite, energy balance, maintenance of body weight, reward and addiction, and the stress response. Expression of a similar gene transcript in rodents is upregulated following administration of cocaine and amphetamine. Mutations in this gene are associated with susceptibility to obesity in humans. [provided by RefSeq, Feb 2016]

Protein Families:

Secreted Protein

Product images:

Coomassie blue staining of purified CARTPT protein (Cat# [TP306552]). The protein was produced from HEK293T cells transfected with CARTPT cDNA clone (Cat# [RC206552]) using MegaTran 2.0 (Cat# [TT210002]).