

Product datasheet for PH306546

GRAP2 (NM_004810) Human Mass Spec Standard

Product data:

Product Type:	Mass Spec Standards
Description:	GRAP2 MS Standard C13 and N15-labeled recombinant protein (NP_004801)
Species:	Human
Expression Host:	HEK293
Expression cDNA Clone or AA Sequence:	RC206546
Predicted MW:	37.9 kDa
Protein Sequence:	>RC206546 protein sequence Red=Cloning site Green=Tags(s) MEAVAKFDFTASGEDELSFHTGDVLKILSNQEEWFKAELGSQEGYVPKNFIDIQFPKWFHEGLSRHQAEENLLMGKEVGFIIIRASQSSPGDFISVRHEDDVQHFVMDNKGNYFLWTEKFPPLNKLVDYYRTNSISRQKQIFLRDRTREDQGHRGNSLDRRSQGGPHLSGAVGEEIRPSMNRKLSDHPPPLPLQHQHQPPQYAPAPQQLQPPQRYLQHHHFHQERRGSLDINDGHCGLGSEMNAALMHRRHDPVQLQAAGRVRWARALYDFEALEDDELGFHSGEVVEVLDSNPSWWTGRLHNKLG LFPANYVAPMTR TRTRPLEQKLI SEEDLAANDILDYKDDDDKV
Tag:	C-Myc/DDK
Purity:	> 80% as determined by SDS-PAGE and Coomassie blue staining
Concentration:	>0.05 µg/µL as determined by microplate BCA method
Labeling Method:	Labeled with [U- ¹³ C ₆ , ¹⁵ N ₄]-L-Arginine and [U- ¹³ C ₆ , ¹⁵ N ₂]-L-Lysine
Buffer:	25 mM Tris-HCl, 100 mM glycine, pH 7.3
Storage:	Store at -80°C. Avoid repeated freeze-thaw cycles.
Stability:	Stable for 3 months from receipt of products under proper storage and handling conditions.
RefSeq:	<u>NP_004801</u>
RefSeq Size:	3514
RefSeq ORF:	990
Synonyms:	GADS; GRAP-2; GRB2L; GRBLG; GrbX; Grf40; GRID; GRPL; Mona; P38
Locus ID:	9402



[View online »](#)

UniProt ID: [O75791](#), [Q6FI14](#)

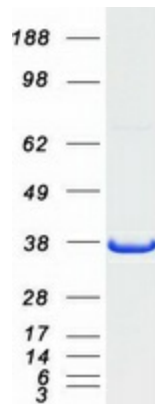
Cytogenetics: 22q13.1

Summary: This gene encodes a member of the GRB2/Sem5/Drk family. This member is an adaptor-like protein involved in leukocyte-specific protein-tyrosine kinase signaling. Like its related family member, GRB2-related adaptor protein (GRAP), this protein contains an SH2 domain flanked by two SH3 domains. This protein interacts with other proteins, such as GRB2-associated binding protein 1 (GAB1) and the SLP-76 leukocyte protein (LCP2), through its SH3 domains. Multiple alternatively spliced transcript variants encoding distinct isoforms have been found for this gene. [provided by RefSeq, Apr 2014]

Protein Families: Druggable Genome

Protein Pathways: T cell receptor signaling pathway

Product images:



Coomassie blue staining of purified GRAP2 protein (Cat# [TP306546]). The protein was produced from HEK293T cells transfected with GRAP2 cDNA clone (Cat# [RC206546]) using MegaTran 2.0 (Cat# [TT210002]).