

## Product datasheet for PH306537

### NSP3 (SH2D3C) (NM\_005489) Human Mass Spec Standard

#### Product data:

Product Type:	Mass Spec Standards
Description:	SH2D3C MS Standard C13 and N15-labeled recombinant protein (NP_005480)
Species:	Human
Expression Host:	HEK293
Expression cDNA Clone or AA Sequence:	RC206537
Predicted MW:	77.1 kDa
Protein Sequence:	>RC206537 protein sequence Red=Cloning site Green=Tags(s)

MTAVGRRCPALGSRGAAGEPEAGSDYVKFSKEYILDSSPEKLHKELEELKLSSTDLRSHAWYHGRIPR  
EVSETLVQRNGDFLIRDSTSLGDYVLTTCRWRNQALHFKINKVVVKAGESYTHIQYLFEQESFDHVPALV  
RYHVGSRKAVSEQSGAIIYCPVNRTFPLRYLEASYGLGQGSSKASPVPSPGPKGSHMKRRSVTMDGLT  
ADKVTRSDGCPSTSLPRPRDSIRSCALSMDQIPDLHSPMSPISESPSSPAYSTVTRVHAAPAAPSATAL  
PASPVARRSSEPQLCPGSAPKTHGESDKGPHTSPSHTLGKASPPSLSSYSDPDSGHYCQLQPPVRSRE  
WAATETSSQARSYGERLKELSENGAPEGDWGTFTVPIVEVTSSFNPATFQSLIIPRDNRPLEVGLLRK  
VKELLAEVDARTLARHVTKVDCLVARILGVTKEMQTLMGVRWGMELLTLPHGRQLRDLLERFHTMSIML  
AVDILGCTGSAEERAALLHKTIQLAELRGTMGNMFSFAAVMGALDMAQISRLEQTVVTLRQRHTEGAIL  
YEKCLKPFLKSLNEGKEGPPLSNTTFPHVLPILITLLECD SAPPEGPEPWGSTEHGVEVLAHLEAARTVA  
HHGGLYHTNAEVKLQGFQARPELLEVFSTEFQMRLLLWGSQASSQARRYEKFDKVLTAALSHKLEPAVRS  
SEL

TRTRPLEQKLI SEEDLAANDILDYKDDDDKV

Tag:	C-Myc/DDK
Purity:	> 80% as determined by SDS-PAGE and Coomassie blue staining
Concentration:	>0.05 µg/µL as determined by microplate BCA method
Labeling Method:	Labeled with [U- 13C6, 15N4]-L-Arginine and [U- 13C6, 15N2]-L-Lysine
Buffer:	25 mM Tris-HCl, 100 mM glycine, pH 7.3
Storage:	Store at -80°C. Avoid repeated freeze-thaw cycles.
Stability:	Stable for 3 months from receipt of products under proper storage and handling conditions.
RefSeq:	<u><a href="#">NP_005480</a></u>



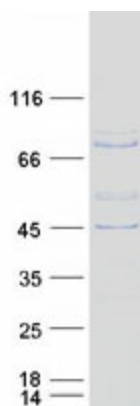
[View online »](#)

RefSeq Size:	2692
RefSeq ORF:	2109
Synonyms:	CHAT; NSP3; PRO34088; SHEP1
Locus ID:	10044
UniProt ID:	<a href="#">Q8N5H7</a>
Cytogenetics:	9q34.11

**Summary:** This gene encodes an adaptor protein and member of a cytoplasmic protein family involved in cell migration. The encoded protein contains a putative Src homology 2 (SH2) domain and guanine nucleotide exchange factor-like domain which allows this signaling protein to form a complex with scaffolding protein Crk-associated substrate. Multiple transcript variants encoding different isoforms have been found for this gene. [provided by RefSeq, Nov 2011]

**Protein Families:** Druggable Genome

### Product images:



Coomassie blue staining of purified SH2D3C protein (Cat# [TP306537]). The protein was produced from HEK293T cells transfected with SH2D3C cDNA clone (Cat# [RC206537]) using MegaTran 2.0 (Cat# [TT210002]).