

Product datasheet for PH306520

CGREF1 (NM_006569) Human Mass Spec Standard

Product data:

Product Type:	Mass Spec Standards
Description:	CGREF1 MS Standard C13 and N15-labeled recombinant protein (NP_006560)
Species:	Human
Expression Host:	HEK293
Expression cDNA Clone or AA Sequence:	RC206520
Predicted MW:	31.9 kDa
Protein Sequence:	>RC206520 protein sequence Red=Cloning site Green=Tags(s) MLPLTMTVLILLLLPTGQAAPKDGVTRPDSEVQHQLLPNPFQPGQEQLGLLQSYLKGLGRTEVQLEHLSE EQVLLYLFALHDYDQSGQLDGLELLSMLTAALAPGAANSPTTNPVILIVDKVLETQDLNGDGLMTPAELI NFPGVALRHVEPGEPLAPSPQEPQAVGRQSLAKSPLRQETQEAPGPREEAKGQVEARRESLDPVQEPGG QAEADGDVPGPRGEAEGQAEAKGDAPGPRGEAGGQAEAEADAPGPRGEAGGQAEARENGEAAKELPGETL ESKNTQNDFEVHIVQVENDEI TRTRPLEQKLISEEDLAANDILDYKDDDDKV
Tag:	C-Myc/DDK
Purity:	> 80% as determined by SDS-PAGE and Coomassie blue staining
Concentration:	>0.05 µg/µL as determined by microplate BCA method
Labeling Method:	Labeled with [U- 13C6, 15N4]-L-Arginine and [U- 13C6, 15N2]-L-Lysine
Buffer:	25 mM Tris-HCl, 100 mM glycine, pH 7.3
Storage:	Store at -80°C. Avoid repeated freeze-thaw cycles.
Stability:	Stable for 3 months from receipt of products under proper storage and handling conditions.
RefSeq:	<u>NP_006560</u>
RefSeq Size:	1934
RefSeq ORF:	903
Synonyms:	CGR11
Locus ID:	10669



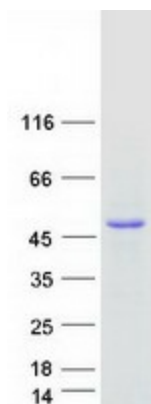
[View online »](#)

UniProt ID: [Q99674](#)

Cytogenetics: 2p23.3

Summary: Mediates cell-cell adhesion in a calcium-dependent manner (By similarity). Able to inhibit growth in several cell lines.[UniProtKB/Swiss-Prot Function]

Product images:



Coomassie blue staining of purified CGREF1 protein (Cat# [TP306520]). The protein was produced from HEK293T cells transfected with CGREF1 cDNA clone (Cat# [RC206520]) using MegaTran 2.0 (Cat# [TT210002]).