

## Product datasheet for PH306504

### HBZ (NM\_005332) Human Mass Spec Standard

#### Product data:

Product Type:	Mass Spec Standards
Description:	HBZ MS Standard C13 and N15-labeled recombinant protein (NP_005323)
Species:	Human
Expression Host:	HEK293
Expression cDNA Clone or AA Sequence:	RC206504
Predicted MW:	15.6 kDa
Protein Sequence:	>RC206504 protein sequence <b>Red</b> =Cloning site <b>Green</b> =Tags(s)  MSLTKTERTIIIVSMWAKISTQADTIGTETLERLFLSHPQTKTYFPFDLHPGSAQLRAHGSKVVAAVGDA YKSIDDIGGALSKLSELHAYILRVDPVNFKLLSHCLLVTLAARFPADFTAEAHAAWDKFLSVSSVLTEK YR  <b>TR</b> TRPLEQKLISEEDLAANDILDYKDDDDKV
Tag:	C-Myc/DDK
Purity:	> 80% as determined by SDS-PAGE and Coomassie blue staining
Concentration:	>0.05 µg/µL as determined by microplate BCA method
Labeling Method:	Labeled with [U- <sup>13</sup> C <sub>6</sub> , <sup>15</sup> N <sub>4</sub> ]-L-Arginine and [U- <sup>13</sup> C <sub>6</sub> , <sup>15</sup> N <sub>2</sub> ]-L-Lysine
Buffer:	25 mM Tris-HCl, 100 mM glycine, pH 7.3
Storage:	Store at -80°C. Avoid repeated freeze-thaw cycles.
Stability:	Stable for 3 months from receipt of products under proper storage and handling conditions.
RefSeq:	<a href="#">NP_005323</a>
RefSeq Size:	589
RefSeq ORF:	426
Synonyms:	HBAZ; HBZ-T1; HBZ1
Locus ID:	3050
UniProt ID:	<a href="#">P02008</a>



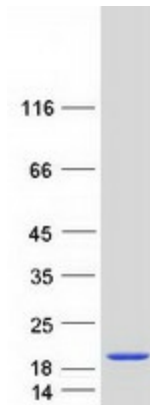
[View online »](#)

Cytogenetics: 16p13.3

**Summary:** Zeta-globin is an alpha-like hemoglobin. The zeta-globin polypeptide is synthesized in the yolk sac of the early embryo, while alpha-globin is produced throughout fetal and adult life. The zeta-globin gene is a member of the human alpha-globin gene cluster that includes five functional genes and two pseudogenes. The order of genes is: 5' - zeta - pseudozeta - mu - pseudoalpha-1 - alpha-2 -alpha-1 - theta1 - 3'. [provided by RefSeq, Nov 2009]

**Protein Families:** Embryonic stem cells, ES Cell Differentiation/IPS

### Product images:



Coomassie blue staining of purified HBZ protein (Cat# [TP306504]). The protein was produced from HEK293T cells transfected with HBZ cDNA clone (Cat# [RC206504]) using MegaTran 2.0 (Cat# [TT210002]).