

Product datasheet for PH306502

KCNE1L (KCNE5) (NM_012282) Human Mass Spec Standard

Product data:

Product Type:	Mass Spec Standards
Description:	KCNE1L MS Standard C13 and N15-labeled recombinant protein (NP_036414)
Species:	Human
Expression Host:	HEK293
Expression cDNA Clone or AA Sequence:	RC206502
Predicted MW:	15 kDa
Protein Sequence:	<p>>RC206502 protein sequence</p> <p>Red=Cloning site Green=Tags(s)</p> <p>MNCSESQRLRTLRSRLLELHHRGNASGLGAGPRPSMGMGVVPDPFVGREVTSAGGDDAYLYILLIMIFY ACLAGGLILAYTRSRKLEAKDEPSQACAEHEWAPGGALTADAEAAAGSQAEGRRLASEGLPALAQGA RV</p> <p>TRTRPLEQKLISEEDLAANDILDYKDDDDKV</p>
Tag:	C-Myc/DDK
Purity:	> 80% as determined by SDS-PAGE and Coomassie blue staining
Concentration:	>0.05 µg/µL as determined by microplate BCA method
Labeling Method:	Labeled with [U- ¹³ C ₆ , ¹⁵ N ₄]-L-Arginine and [U- ¹³ C ₆ , ¹⁵ N ₂]-L-Lysine
Buffer:	25 mM Tris-HCl, 100 mM glycine, pH 7.3
Storage:	Store at -80°C. Avoid repeated freeze-thaw cycles.
Stability:	Stable for 3 months from receipt of products under proper storage and handling conditions.
RefSeq:	NP_036414
RefSeq Size:	1465
RefSeq ORF:	426
Synonyms:	KCNE1L
Locus ID:	23630
UniProt ID:	Q9UJ90

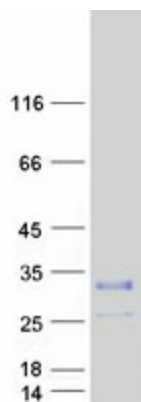

[View online »](#)

Cytogenetics: Xq23

Summary: This gene encodes a member of a family of single pass transmembrane domain proteins that function as ancillary subunits to voltage-gated potassium channels. Members of this family affect diverse processes in potassium channel regulation, including ion selectivity, voltage dependence, and anterograde recycling from the plasma membrane. Variants of this gene are associated with idiopathic ventricular fibrillation and Brugada syndrome. [provided by RefSeq, Nov 2016]

Protein Families: Druggable Genome, Ion Channels: Other, Transmembrane

Product images:



Coomassie blue staining of purified KCNE5 protein (Cat# [TP306502]). The protein was produced from HEK293T cells transfected with KCNE5 cDNA clone (Cat# [RC206502]) using MegaTran 2.0 (Cat# [TT210002]).