

## Product datasheet for PH306489

### CHST15 (NM\_015892) Human Mass Spec Standard

#### Product data:

Product Type:	Mass Spec Standards
Description:	CHST15 MS Standard C13 and N15-labeled recombinant protein (NP_056976)
Species:	Human
Expression Host:	HEK293
Expression cDNA Clone or AA Sequence:	RC206489
Predicted MW:	64.9 kDa
Protein Sequence:	>RC206489 protein sequence Red=Cloning site Green=Tags(s)

MRHCINCCIQLLPDGAHKQVNCQGGPHHGHQACPTCKGENKILFRVDSKQMNLLAVLEVRTEGNENWGG  
FLRFKKGKRCSLVFGLIIMTLVMASYILSGAHQELLISSPFHYGGFSPNSLMDSENPSDTKEHHHQSSV  
NNISYMKDYPSIKLIINSITTRIEFTTRQLPDLEDLKKQELHMFVSVIPNKFLPNSKSPCWYEEFSGQNTT  
DPYL TNSYVLYSKRFRSTFDALRKAFWGH LAHAHGKHFRRLRCLPHFYIIGQPKCGTTDL YDRRLRHPEVK  
FSAIKEPHWWTRKRF GIVRLRDGLRDRYPVEDYLDLFDLAAHQIHQGLQASSAKEQSKMNTI IIGEASAS  
TMWDNNAWTF FYDNSTDGEPFL TQDF IHAFQPNARLIVMLRDPVERLYSDYL YFASSNKSADDFHEKVT  
EALQLFENCMLDYSLRACVYNNLNNAMPVRLQVGLYAVYLLDWLSVFDKQQLILRLEDHASNVKYTMH  
KVVFQLNLGPLSEKQEALMTKSPASNARRPEDRNLGPMWPI TQKILRDFYRPFNARLAQVLADFAWK  
T

TRTRPLEQKLI SEEDLAANDILDYKDDDDKV

Tag:	C-Myc/DDK
Purity:	> 80% as determined by SDS-PAGE and Coomassie blue staining
Concentration:	>0.05 µg/µL as determined by microplate BCA method
Labeling Method:	Labeled with [U- 13C6, 15N4]-L-Arginine and [U- 13C6, 15N2]-L-Lysine
Buffer:	25 mM Tris-HCl, 100 mM glycine, pH 7.3
Storage:	Store at -80°C. Avoid repeated freeze-thaw cycles.
Stability:	Stable for 3 months from receipt of products under proper storage and handling conditions.
RefSeq:	<u><a href="#">NP_056976</a></u>
RefSeq Size:	4813
RefSeq ORF:	1683



[View online »](#)

**Synonyms:** BRAG; GALNAC4S-6ST

**Locus ID:** 51363

**UniProt ID:** [Q7LFX5](#)

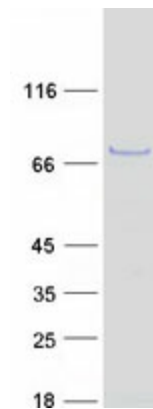
**Cytogenetics:** 10q26.13

**Summary:** Chondroitin sulfate (CS) is a glycosaminoglycan which is an important structural component of the extracellular matrix and which links to proteins to form proteoglycans. Chondroitin sulfate E (CS-E) is an isomer of chondroitin sulfate in which the C-4 and C-6 hydroxyl groups are sulfated. This gene encodes a type II transmembrane glycoprotein that acts as a sulfotransferase to transfer sulfate to the C-6 hydroxyl group of chondroitin sulfate. This gene has also been identified as being co-expressed with RAG1 in B-cells and as potentially acting as a B-cell surface signaling receptor. Alternative splicing results in multiple transcript variants encoding distinct isoforms. [provided by RefSeq, Jul 2012]

**Protein Families:** Transmembrane

**Protein Pathways:** Chondroitin sulfate biosynthesis

### Product images:



Coomassie blue staining of purified CHST15 protein (Cat# [TP306489]). The protein was produced from HEK293T cells transfected with CHST15 cDNA clone (Cat# [RC206489]) using MegaTran 2.0 (Cat# [TT210002]).