

Product datasheet for PH306451

REG1 beta (REG1B) (NM_006507) Human Mass Spec Standard

Product data:

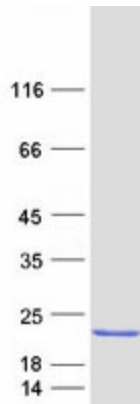
Product Type:	Mass Spec Standards
Description:	REG1B MS Standard C13 and N15-labeled recombinant protein (NP_006498)
Species:	Human
Expression Host:	HEK293
Expression cDNA Clone or AA Sequence:	RC206451
Predicted MW:	18.7 kDa
Protein Sequence:	<p>>RC206451 protein sequence</p> <p>Red=Cloning site Green=Tags(s)</p> <p>MAQTNSFFMLISSLMFLSLSQGQESQTELPNPRISCEPNTNAYRSYCYFNEPWTWVDADLYCQNMMSG NLVSVLTQAEGAFVASLIKESSTDDSNVWIGLHDPKKNRRWHWSSGSLVSYKSWDTGSPSSANAGYCASL TSCSGFKKWKDESCEKKFSFVCKFKN</p> <p>TRTRPLEQKLISEEDLAANDILDYKDDDDKV</p>
Tag:	C-Myc/DDK
Purity:	> 80% as determined by SDS-PAGE and Coomassie blue staining
Concentration:	>0.05 µg/µL as determined by microplate BCA method
Labeling Method:	Labeled with [U- ¹³ C ₆ , ¹⁵ N ₄]-L-Arginine and [U- ¹³ C ₆ , ¹⁵ N ₂]-L-Lysine
Buffer:	25 mM Tris-HCl, 100 mM glycine, pH 7.3
Storage:	Store at -80°C. Avoid repeated freeze-thaw cycles.
Stability:	Stable for 3 months from receipt of products under proper storage and handling conditions.
RefSeq:	<u>NP_006498</u>
RefSeq Size:	812
RefSeq ORF:	498
Synonyms:	PSPS2; REGH; REGI-BETA; REGL
Locus ID:	5968
UniProt ID:	<u>P48304</u> , <u>Q6ICS1</u>


[View online »](#)

Cytogenetics: 2p12

Summary: This gene is a type I subclass member of the Reg gene family. The Reg gene family is a multigene family grouped into four subclasses, types I, II, III and IV based on the primary structures of the encoded proteins. This gene encodes a protein secreted by the exocrine pancreas that is highly similar to the REG1A protein. The related REG1A protein is associated with islet cell regeneration and diabetogenesis, and may be involved in pancreatic lithogenesis. Reg family members REG1A, REG1, PAP and this gene are tandemly clustered on chromosome 2p12 and may have arisen from the same ancestral gene by gene duplication. [provided by RefSeq, Jul 2008]

Product images:



Coomassie blue staining of purified REG1B protein (Cat# [TP306451]). The protein was produced from HEK293T cells transfected with REG1B cDNA clone (Cat# [RC206451]) using MegaTran 2.0 (Cat# [TT210002]).