

Product datasheet for PH306445

SERPINI2 (NM_006217) Human Mass Spec Standard

Product data:

Product Type:	Mass Spec Standards
Description:	SERPINI2 MS Standard C13 and N15-labeled recombinant protein (NP_006208)
Species:	Human
Expression Host:	HEK293
Expression cDNA Clone or AA Sequence:	RC206445
Predicted MW:	47.4 kDa
Protein Sequence:	>RC206445 protein sequence Red=Cloning site Green=Tags(s)
	<p>MIQNL MREVKMDTIFLWSLLLLFFGSQASRCSAQKNTAVDLYQEVSLSHKDNIIFSPLGITLVLEMVQ LGAKGKAQQQIRQTLKQQETSAGEEFFVLKSFFSAISEKKQEFTFNLANALYLQEGFTVKEQYLHGNKEF FQSAIKLVDFQDAKACAEMISTWVERKTDGKIKDMFSGEEFGPLTRLVLVNAIYFKGDWKQKFRKEDTQL INFTKNGSTVKIPMMKALLRRTKYGYFSESSLNYQVLELSYKGDDEFSLIIILPAEGMDIEEVEKLITAQQ ILKWLSEMQEEVEISLPRFKVEQKVDKDLVLSLNITEIFSGGCDLSGITDSSEVYVSQVTQKVFFFEIN EDGSEAATSTGIHIPVIMSLAQSQFIANHPFLFIMKHNPTESILFMGRVTNPDTQEIKGRDLDSL</p> <p>TRTRPLEQKLI SEEDLAANDILDYKDDDDKV</p>
Tag:	C-Myc/DDK
Purity:	> 80% as determined by SDS-PAGE and Coomassie blue staining
Concentration:	>0.05 µg/µL as determined by microplate BCA method
Labeling Method:	Labeled with [U- ¹³ C ₆ , ¹⁵ N ₄]-L-Arginine and [U- ¹³ C ₆ , ¹⁵ N ₂]-L-Lysine
Buffer:	25 mM Tris-HCl, 100 mM glycine, pH 7.3
Storage:	Store at -80°C. Avoid repeated freeze-thaw cycles.
Stability:	Stable for 3 months from receipt of products under proper storage and handling conditions.
RefSeq:	<u>NP_006208</u>
RefSeq Size:	1678
RefSeq ORF:	1248
Synonyms:	MEPI; PANCPIN; PI14; TSA2004
Locus ID:	5276



[View online »](#)

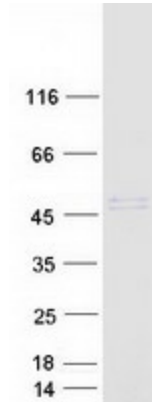
UniProt ID: [O75830](#), [A0A0C4DGW9](#), [B4DDY9](#)

Cytogenetics: 3q26.1

Summary: The gene encodes a member of a family of proteins that acts as inhibitors of serine proteases. These proteins function in the regulation of a variety of physiological processes, including coagulation, fibrinolysis, development, malignancy, and inflammation. Expression of the encoded protein may be downregulated during pancreatic carcinogenesis. Alternative splicing results in multiple transcript variants for this gene. [provided by RefSeq, Jan 2013]

Protein Families: Druggable Genome, Secreted Protein

Product images:



Coomassie blue staining of purified SERPINI2 protein (Cat# [TP306445]). The protein was produced from HEK293T cells transfected with SERPINI2 cDNA clone (Cat# [RC206445]) using MegaTran 2.0 (Cat# [TT210002]).