

Product datasheet for PH306435

Alpha 2 Antiplasmin (SERPINF2) (NM_000934) Human Mass Spec Standard

Product data:

Product Type:	Mass Spec Standards
Description:	SERPINF2 MS Standard C13 and N15-labeled recombinant protein (NP_000925)
Species:	Human
Expression Host:	HEK293
Expression cDNA Clone or AA Sequence:	RC206435
Predicted MW:	54.6 kDa
Protein Sequence:	>RC206435 protein sequence Red=Cloning site Green=Tags(s)

MVLLWGLLVLSWSCLQGPCSVFSPVSAMEPLGRQLTSGPNQEQVSPLTLLKLGNEPQGQTALKSPPGVC
SRDPTPEQTHRLARAMMAFTADLFSLVAQTSTCPNLILSPLSVALALSHLALGAQNHTLQRLQQVLHAGS
GPCLPHLLSRLCQDLGPGAFRLAARMYLQKGFPIKEDFLEQSEQLFGAKPVSLTGKQEDDLANINQWVKE
ATEGKIQEFLSGLPEDTVLLLLNAIHFQGFWRNKFDPSTQRDSFHLDEQFTVPVEMMQARTYPLRWFL
EQPEIQVAHFPPKNNMSFVVLVPTHFEWNVSQVLANLSWDTLHPPLVWERPTKVRLPKLYLKHQMDLVAT
LSQLGLQELFQAPDLRGISEQSLVVSQVHQSTLELSEVGVEAAAATSIAMSRMSLSSFVNRPFLLFFIF
EDTTGLPLFVGSVRNPNSAPRELKEQQDSPGNKDFLQSLKGFPRGDKLFGPDLKLVPPMEEDYPQFGSP
K

TRTRPLEQKLI SEEDLAANDILDYKDDDDKV

Tag:	C-Myc/DDK
Purity:	> 80% as determined by SDS-PAGE and Coomassie blue staining
Concentration:	>0.05 µg/µL as determined by microplate BCA method
Labeling Method:	Labeled with [U- ¹³ C ₆ , ¹⁵ N ₄]-L-Arginine and [U- ¹³ C ₆ , ¹⁵ N ₂]-L-Lysine
Buffer:	25 mM Tris-HCl, 100 mM glycine, pH 7.3
Storage:	Store at -80°C. Avoid repeated freeze-thaw cycles.
Stability:	Stable for 3 months from receipt of products under proper storage and handling conditions.
RefSeq:	<u>NP_000925</u>
RefSeq Size:	2284
RefSeq ORF:	1473



[View online »](#)

Synonyms: A2AP; AAP; ALPHA-2-PI; alpha2AP; API; PLI

Locus ID: 5345

UniProt ID: [P08697](#)

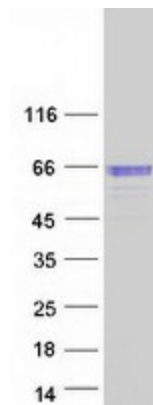
Cytogenetics: 17p13.3

Summary: This gene encodes a member of the serpin family of serine protease inhibitors. The protein is a major inhibitor of plasmin, which degrades fibrin and various other proteins. Consequently, the proper function of this gene has a major role in regulating the blood clotting pathway. Mutations in this gene result in alpha-2-plasmin inhibitor deficiency, which is characterized by severe hemorrhagic diathesis. Multiple transcript variants encoding different isoforms have been found for this gene. [provided by RefSeq, Sep 2009]

Protein Families: Druggable Genome, Secreted Protein

Protein Pathways: Complement and coagulation cascades

Product images:



Coomassie blue staining of purified SERPINF2 protein (Cat# [TP306435]). The protein was produced from HEK293T cells transfected with SERPINF2 cDNA clone (Cat# [RC206435]) using MegaTran 2.0 (Cat# [TT210002]).