

## Product datasheet for PH306428

### CPNE7 (NM\_153636) Human Mass Spec Standard

#### Product data:

Product Type:	Mass Spec Standards
Description:	CPNE7 MS Standard C13 and N15-labeled recombinant protein (NP_705900)
Species:	Human
Expression Host:	HEK293
Expression cDNA Clone or AA Sequence:	RC206428
Predicted MW:	61.9 kDa
Protein Sequence:	>RC206428 protein sequence Red=Cloning site Green=Tags(s)

MSAGSERGAAATPGGLPAPCASKVELRLSCRHLLDRDPLTKSDPSVALLQQAQQQWVQVGRTEVVRSSLH  
PVFSKVFTVDYYFEEVQRLRFEVYDTHGSPGFSQEDDFLGGMECTLGQIYAQKKVTRPLLLKFGRNAGK  
STITVIAEDISGNNGYVELSFRARKLDDKDLFSKSDPFLELYRVNDDQGLQLVYRTEVVKNNLNPVWEAF  
KVLSLSSLCSEETRPLKCLVWDYDSRGKHDFIGEFSTTFEEMQKAFFEEGQAQWDCVNPYKQKRRSYKNS  
GVVVLADLKFHRVYSFLDYIMGGCQIHFTVAIDFTASNGDPRNSCSLHYINPYQPNEYLKALVSVGEICQ  
DYSDKRFSALGFGARIPPKYEVSHDFAINFNPEDDECEGIQGVVEAYQNCLPRVQLYGPNTVAPIISKV  
ARVAAAEEESTGKASQYYILLILTGDVVTDMA DTREAIVRASRLPMSIIIVGVGNADFTDMQVLDGDDGVL  
RSPRGEPALRDIVQFVPFRELKNASPAALAKCVLAIEVVKQVVEYYSHRGLPPRSLGVPAGEASPGCTP

SGPTRTRPLEQKLI SEEDLAANDILDYKDDDDKV

Tag:	C-Myc/DDK
Purity:	> 80% as determined by SDS-PAGE and Coomassie blue staining
Concentration:	>0.05 µg/µL as determined by microplate BCA method
Labeling Method:	Labeled with [U- 13C6, 15N4]-L-Arginine and [U- 13C6, 15N2]-L-Lysine
Buffer:	25 mM Tris-HCl, 100 mM glycine, pH 7.3
Storage:	Store at -80°C. Avoid repeated freeze-thaw cycles.
Stability:	Stable for 3 months from receipt of products under proper storage and handling conditions.
RefSeq:	<u>NP_705900</u>
RefSeq Size:	2449
RefSeq ORF:	1674

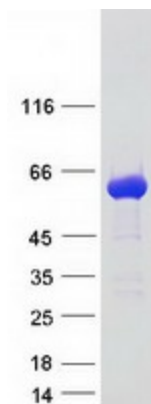


[View online »](#)

Locus ID: 27132  
UniProt ID: [Q9UBL6](#)  
Cytogenetics: 16q24.3

**Summary:** This gene encodes a member of the copine family, which is composed of calcium-dependent membrane-binding proteins. The gene product contains two N-terminal C2 domains and one von Willebrand factor A domain. The encoded protein may be involved in membrane trafficking. Two alternatively spliced transcript variants encoding different isoforms have been found for this gene. [provided by RefSeq, Nov 2008]

### Product images:



Coomassie blue staining of purified CPNE7 protein (Cat# [TP306428]). The protein was produced from HEK293T cells transfected with CPNE7 cDNA clone (Cat# [RC206428]) using MegaTran 2.0 (Cat# [TT210002]).