

Product datasheet for PH306407

GMEB2 (NM_012384) Human Mass Spec Standard

Product data:

Product Type:	Mass Spec Standards
Description:	GMEB2 MS Standard C13 and N15-labeled recombinant protein (NP_036516)
Species:	Human
Expression Host:	HEK293
Expression cDNA Clone or AA Sequence:	RC206407
Predicted MW:	56.2 kDa
Protein Sequence:	>RC206407 representing NM_012384 Red=Cloning site Green=Tags(s)

MATPDVSVHMEEVVVVVTPDTAVDVGSGVEGVKTVLVTTNLAHPGGDLTEDNMETENAAAAAAFTASSQ
LKEAVLVKMAEEGENLEAEIVYPITCGDSRANLIWRKFVCPGINVKCVQYDEHVISPKFEVHLAGKSTLK
DWKRAIRMNGIMLRKIMDSGELDFYQHDKVCNTRSTKIDLSGARVSLSSPTSAEYIPLTPAAADVNGS
PATITITETCEDPGDWTAAIGDDTFTFWRGLKDAGLLDEVIQEFHQELVETMRGLQQRVQDPPLQLRDAVL
LNNIVQNFQMLDLVKKVLASHKCQMDRSREQYARDLAALQCCDEHRRRAKELKHKSQLSNVMTLTPV
SLPPPVKRPRLARATSGPAAMASQVLTQSAQLALGPGVPVPQLTSVPLGKVVSTLPSTVLGKGSQAPP
SSPASPLLGGYTVLASSGSTYPTVEIHPDASSLTVLSTAAVQDQSTVFKVVVSPQLLTLPLGLPTLQNV
AQASPGSSTIVTPAGAAPGPEEHTATIEVAAMAEDHERK

SGPTRRRLEQKLI SEEDLAANDILDYKDDDDKV

Tag:	C-Myc/DDK
Purity:	> 80% as determined by SDS-PAGE and Coomassie blue staining
Concentration:	>0.05 µg/µL as determined by microplate BCA method
Labeling Method:	Labeled with [U- ¹³ C ₆ , ¹⁵ N ₄]-L-Arginine and [U- ¹³ C ₆ , ¹⁵ N ₂]-L-Lysine
Buffer:	25 mM Tris-HCl, 100 mM glycine, pH 7.3
Storage:	Store at -80°C. Avoid repeated freeze-thaw cycles.
Stability:	Stable for 3 months from receipt of products under proper storage and handling conditions.
RefSeq:	<u>NP_036516</u>
RefSeq Size:	4559
RefSeq ORF:	1590



[View online »](#)

Synonyms: GMEB-2; P79PIF; PIF79

Locus ID: 26205

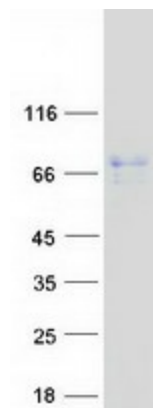
UniProt ID: [Q9UKD1](#), [B4DQ50](#)

Cytogenetics: 20q13.33

Summary: This gene is a member of KDWK gene family. The product of this gene associates with GMEB1 protein, and the complex is essential for parvovirus DNA replication. Study of rat homolog implicates the role of this gene in modulation of transactivation by the glucocorticoid receptor bound to glucocorticoid response elements. This gene appears to use multiple polyadenylation sites. [provided by RefSeq, Jul 2008]

Protein Families: Druggable Genome, Transcription Factors

Product images:



Coomassie blue staining of purified GMEB2 protein (Cat# [TP306407]). The protein was produced from HEK293T cells transfected with GMEB2 cDNA clone (Cat# [RC206407]) using MegaTran 2.0 (Cat# [TT210002]).