

Product datasheet for PH306404

Bcl G (BCL2L14) (NM_138722) Human Mass Spec Standard

Product data:

| | |
|---------------------------------------|--|
| Product Type: | Mass Spec Standards |
| Description: | BCL2L14 MS Standard C13 and N15-labeled recombinant protein (NP_620048) |
| Species: | Human |
| Expression Host: | HEK293 |
| Expression cDNA Clone or AA Sequence: | RC206404 |
| Predicted MW: | 36.6 kDa |
| Protein Sequence: | >RC206404 protein sequence Red=Cloning site Green=Tags(s) MCSTSGCDLEEIPLDDDLNTIEFKILAYYTRHHVFKSTPALFSPKLLRTRSLSQRGLGNCANESWTEV SWPCRNQSSEKAINLGKKSSWKAFFGVVEKEDSQSTPAKVSAQGQRTLEYQDSHSQQWSRCLSNVEQC LEHEAVDPKVISIANRVAEIVYSWPPPQATQAGGFKSKEIFVTEGLSFQLQGHVPVASSSKKDEEEQILA KIVELLKYSQDLERKLLKDKALMGHFQDGLSYSVFKITIDQVLMGVDPGRGESEVKAQGFKAALVIDVTA KLT AIDNHPMNRVLGFGTKYLKENFSPWIQQHGGWEKILGISHEEVD TRTRPLEQKLI SEEDLAANDILDYKDDDDKV |
| Tag: | C-Myc/DDK |
| Purity: | > 80% as determined by SDS-PAGE and Coomassie blue staining |
| Concentration: | >0.05 µg/µL as determined by microplate BCA method |
| Labeling Method: | Labeled with [U- 13C6, 15N4]-L-Arginine and [U- 13C6, 15N2]-L-Lysine |
| Buffer: | 25 mM Tris-HCl, 100 mM glycine, pH 7.3 |
| Storage: | Store at -80°C. Avoid repeated freeze-thaw cycles. |
| Stability: | Stable for 3 months from receipt of products under proper storage and handling conditions. |
| RefSeq: | <u>NP_620048</u> |
| RefSeq Size: | 1886 |
| RefSeq ORF: | 981 |
| Synonyms: | BCLG |
| Locus ID: | 79370 |



[View online »](#)

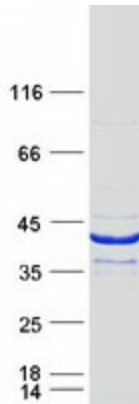
UniProt ID: [Q9BZR8](#), [A0A024RAR1](#)

Cytogenetics: 12p13.2

Summary: The protein encoded by this gene belongs to the BCL2 protein family. BCL2 family members form hetero- or homodimers and act as anti- or pro-apoptotic regulators that are involved in a wide variety of cellular activities. Overexpression of this gene has been shown to induce apoptosis in cells. Three alternatively spliced transcript variants encoding two distinct isoforms have been reported for this gene. [provided by RefSeq, May 2009]

Protein Families: Druggable Genome

Product images:



Coomassie blue staining of purified BCL2L14 protein (Cat# [TP306404]). The protein was produced from HEK293T cells transfected with BCL2L14 cDNA clone (Cat# [RC206404]) using MegaTran 2.0 (Cat# [TT210002]).