

## Product datasheet for PH306400

### RILP (NM\_031430) Human Mass Spec Standard

#### Product data:

Product Type:	Mass Spec Standards
Description:	RILP MS Standard C13 and N15-labeled recombinant protein (NP_113618)
Species:	Human
Expression Host:	HEK293
Expression cDNA Clone or AA Sequence:	RC206400
Predicted MW:	44 kDa
Protein Sequence:	>RC206400 representing NM_031430 Red=Cloning site Green=Tags(s)  MEPRRAAPGVPGWGSREAAGSASAAELVYHLAAGALGTELQDLARRFGPEAAAGLVPLVVRALLELEQAAV GPAPDSLQVSAQPAEQELRRLREENERLRREL RAGPQEERALLRQLKEVTDRQRDELRAHNRDLRQRGQE TEALQEQLQRLLLVNAELRHKLAAMQTLRAAQDRERERQPGEAATPQAKERARGQAGRPGHQHGQEP WATAGAGAPGNPEDPAEAAQQLGRPSEAGQCRFSREEFEQILQERNELKAKVFLLEELAYFQRELLTDH RVPGLLLEAMKVAVRKQRKKIKAKMLGTPEEAESSEDEAGPWILLSDDKGDHPPPPESKIQSFFGLWYRG KAESSEDETSSPAPSKLGGEEEAQPQSPAPDPPCSALHEHLCLGASAAPEA  TRTRPLEQKLI SEEDLAANDILDYKDDDDKV
Tag:	C-Myc/DDK
Purity:	> 80% as determined by SDS-PAGE and Coomassie blue staining
Concentration:	>0.05 µg/µL as determined by microplate BCA method
Labeling Method:	Labeled with [U- <sup>13</sup> C <sub>6</sub> , <sup>15</sup> N <sub>4</sub> ]-L-Arginine and [U- <sup>13</sup> C <sub>6</sub> , <sup>15</sup> N <sub>2</sub> ]-L-Lysine
Buffer:	25 mM Tris-HCl, 100 mM glycine, pH 7.3
Storage:	Store at -80°C. Avoid repeated freeze-thaw cycles.
Stability:	Stable for 3 months from receipt of products under proper storage and handling conditions.
RefSeq:	<u>NP_113618</u>
RefSeq Size:	1811
RefSeq ORF:	1203
Synonyms:	PP10141
Locus ID:	83547



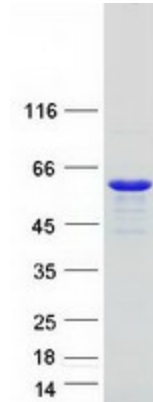
[View online »](#)

UniProt ID: [Q96NA2](#)

Cytogenetics: 17p13.3

**Summary:** This gene encodes a lysosomal protein that interacts with RAB7, a small GTPase that controls transport to endocytic degradative compartments. Studies using mutant forms of the two proteins suggest that this protein represents a downstream effector for RAB7, and both proteins act together in the regulation of late endocytic traffic. A unique region of this protein has also been shown to be involved in the regulation of lysosomal morphology. [provided by RefSeq, Sep 2011]

### Product images:



Coomassie blue staining of purified RILP protein (Cat# [TP306400]). The protein was produced from HEK293T cells transfected with RILP cDNA clone (Cat# [RC206400]) using MegaTran 2.0 (Cat# [TT210002]).