

## Product datasheet for PH306380

### LRR2 (NM\_024750) Human Mass Spec Standard

#### Product data:

Product Type:	Mass Spec Standards
Description:	LRR2 MS Standard C13 and N15-labeled recombinant protein (NP_079026)
Species:	Human
Expression Host:	HEK293
Expression cDNA Clone or AA Sequence:	RC206380
Predicted MW:	42.9 kDa
Protein Sequence:	>RC206380 protein sequence Red=Cloning site Green=Tags(s)  MGHKVVVFDISVIRALWETRVKKHKAQKKEVERLEKSALEKIKEEWNFVAECRRKGIPQAVYCKNGFID TSVRLLDKIERNTLTRQSSLPKDRGRSSAFVFELSGEHWTELPDSLKEQTHLREWYISNTLIQIPTYI QLFQAMRILDLPKNQISHLPAEIGCLKNLKNLNVGFNYLKSIPPELGDCENLERLDCSGNLELMELPFEL SNLKQVTFVDISANKFSSVPICVLRMSNLQWLDISSNNLTDLPQDIDRLEELQSFLLYKNKLTYPYSML NLKKLTLLVVSGDHLVELPTALCDSSTPLKVFVSLMDNPIDNAQCEDGNEIMESERDRQHFDEVMKAYIE DLKERESVPSYTTKVSFSLQL  TRTRPLEQKLISEEDLAANDILDYKDDDDKV
Tag:	C-Myc/DDK
Purity:	> 80% as determined by SDS-PAGE and Coomassie blue staining
Concentration:	>0.05 µg/µL as determined by microplate BCA method
Labeling Method:	Labeled with [U- <sup>13</sup> C <sub>6</sub> , <sup>15</sup> N <sub>4</sub> ]-L-Arginine and [U- <sup>13</sup> C <sub>6</sub> , <sup>15</sup> N <sub>2</sub> ]-L-Lysine
Buffer:	25 mM Tris-HCl, 100 mM glycine, pH 7.3
Storage:	Store at -80°C. Avoid repeated freeze-thaw cycles.
Stability:	Stable for 3 months from receipt of products under proper storage and handling conditions.
RefSeq:	<u><a href="#">NP_079026</a></u>
RefSeq Size:	4909
RefSeq ORF:	1113
Synonyms:	leucine-rich repeat-containing 2; leucine rich repeat containing 2
Locus ID:	79442



[View online »](#)

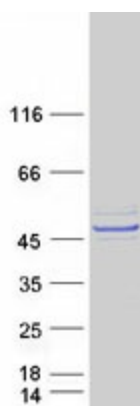
UniProt ID: [Q9BYS8](#)

Cytogenetics: 3p21.31

**Summary:** This gene encodes a member of the leucine-rich repeat-containing family of proteins, which function in diverse biological pathways. This family member may possibly be a nuclear protein. Similarity to the RAS suppressor protein, as well as expression down-regulation observed in tumor cells, suggests that it may function as a tumor suppressor. The gene is located in the chromosome 3 common eliminated region 1 (C3CER1), a 1.4 Mb region that is commonly deleted in diverse tumors. A related pseudogene has been identified on chromosome 2. [provided by RefSeq, Sep 2011]

**Protein Families:** Druggable Genome

### Product images:



Coomassie blue staining of purified LRRC2 protein (Cat# [TP306380]). The protein was produced from HEK293T cells transfected with LRRC2 cDNA clone (Cat# [RC206380]) using MegaTran 2.0 (Cat# [TT210002]).