

Product datasheet for PH306373

SHC4 (NM_203349) Human Mass Spec Standard

Product data:

Product Type:	Mass Spec Standards
Description:	SHC4 MS Standard C13 and N15-labeled recombinant protein (NP_976224)
Species:	Human
Expression Host:	HEK293
Expression cDNA Clone or AA Sequence:	RC206373
Predicted MW:	68.7 kDa
Protein Sequence:	>RC206373 protein sequence Red=Cloning site Green=Tags(s)

MRERGDQSLAGLVLYVGLFGHPGMLHRAKYSRFRNESITSLDEGSSGGSVDKGSQPPPHALAPHLPTEDATLPSQESPTPLCTLIPRMAKLANPATLLSLKNFCLGTKEVPRLKLQESRDPGSSGPPSPETSLSRSGTAPPPQQDLVGHRTALTPDSCPLPGGPEPTLRSRQDRHFLQHLLGMGMNYCVRYMGCVEVLQSMRSLDFGMRTQVTREAI SRLCEAVPGANGAIKKRKPVEFLSTVLGKSNLQFSGMNIKLTISTCSLTLMNLDNQQIIANHHMQSISFASGGDPDDTDYVAYVAKDPVNQRACHILECHNGMAQDVI STIGQAFELRFKQYLNKPSLNTSCESEEVHIDSHAEEREDHEYYNEIPGKQPPVGGVSDMRIVQATEQMAYCPIQCEKLCYLPGNSKCSSVYENCLEQSRAIGNVHPRGVQSQRGTSLLKHTCRVDLFDPCYINTQALQSTPGSAGNQRSAQPLGSPWHCGKAPETVQPGATAQPASSHSLPHIKQQLWSEECYHGKLSRKAESLLVKDGFVRESATSPGQYVLSGLQGGQAKHLLLVDPEGKVRTKDHVFDNVGHLIRYHMDNSLPIISSGSEVSLKQPVKRDNNPALLHSNK

TRTRPLEQKLI SEEDLAANDILDYKDDDDKV

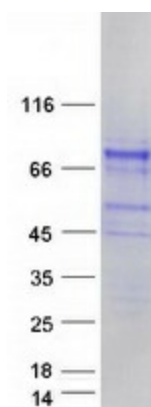
Tag:	C-Myc/DDK
Purity:	> 80% as determined by SDS-PAGE and Coomassie blue staining
Concentration:	>0.05 µg/µL as determined by microplate BCA method
Labeling Method:	Labeled with [U- ¹³ C ₆ , ¹⁵ N ₄]-L-Arginine and [U- ¹³ C ₆ , ¹⁵ N ₂]-L-Lysine
Buffer:	25 mM Tris-HCl, 100 mM glycine, pH 7.3
Storage:	Store at -80°C. Avoid repeated freeze-thaw cycles.
Stability:	Stable for 3 months from receipt of products under proper storage and handling conditions.
RefSeq:	NP_976224
RefSeq Size:	4556
RefSeq ORF:	1890



[View online »](#)

Synonyms:	RaLP; SHCD
Locus ID:	399694
UniProt ID:	Q6S5L8
Cytogenetics:	15q21.1
Summary:	Activates both Ras-dependent and Ras-independent migratory pathways in melanomas. Contributes to the early phases of agrin-induced tyrosine phosphorylation of CHRNB1. [UniProtKB/Swiss-Prot Function]
Protein Pathways:	Chemokine signaling pathway, Chronic myeloid leukemia, ErbB signaling pathway, Focal adhesion, Glioma, Insulin signaling pathway, Natural killer cell mediated cytotoxicity, Neurotrophin signaling pathway

Product images:



Coomassie blue staining of purified SHC4 protein (Cat# [TP306373]). The protein was produced from HEK293T cells transfected with SHC4 cDNA clone (Cat# [RC206373]) using MegaTran 2.0 (Cat# [TT210002]).