

Product datasheet for PH306337

MOB4A (MOB1B) (NM_173468) Human Mass Spec Standard

Product data:

Product Type:	Mass Spec Standards
Description:	MOBKL1A MS Standard C13 and N15-labeled recombinant protein (NP_775739)
Species:	Human
Expression Host:	HEK293
Expression cDNA Clone or AA Sequence:	RC206337
Predicted MW:	25.1 kDa
Protein Sequence:	>RC206337 protein sequence Red =Cloning site Green =Tags(s) MSFLFGSRSSKTFKPKKNIPGSHQYELLKHAEATLGSGNLRMAVMLPEGEDLNEWVAVNTVDFFNQINM LYGTITDFCTEESCPVMSAGPKYEHWADGTNIKKPIKCSAPKYIDYLMTWVQDQLDDETLFPSKIGVPF PKNFMVAKTILKRLFRVYAHYHQHFDPVIQLQEEAHLNTSFKHFIFVQEFNLIDRRELAPLQELIEK LTSKDR TRTRPLEQKLI SEEDLAANDILDYKDDDDKV
Tag:	C-Myc/DDK
Purity:	> 80% as determined by SDS-PAGE and Coomassie blue staining
Concentration:	>0.05 µg/µL as determined by microplate BCA method
Labeling Method:	Labeled with [U- 13C6, 15N4]-L-Arginine and [U- 13C6, 15N2]-L-Lysine
Buffer:	25 mM Tris-HCl, 100 mM glycine, pH 7.3
Storage:	Store at -80°C. Avoid repeated freeze-thaw cycles.
Stability:	Stable for 3 months from receipt of products under proper storage and handling conditions.
RefSeq:	NP_775739
RefSeq Size:	6979
RefSeq ORF:	648
Synonyms:	MATS2; MOB4A; MOBKL1A
Locus ID:	92597
UniProt ID:	Q7L9L4

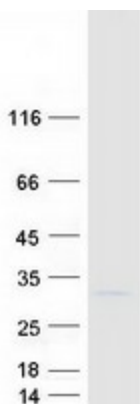


[View online »](#)

Cytogenetics: 4q13.3

Summary: The protein encoded by this gene is similar to the yeast Mob1 protein. Yeast Mob1 binds Mps1p, a protein kinase essential for spindle pole body duplication and mitotic checkpoint regulation. Three transcript variants encoding different isoforms have been found for this gene. [provided by RefSeq, Sep 2011]

Product images:



Coomassie blue staining of purified MOB1B protein (Cat# [TP306337]). The protein was produced from HEK293T cells transfected with MOB1B cDNA clone (Cat# [RC206337]) using MegaTran 2.0 (Cat# [TT210002]).