

Product datasheet for PH306333

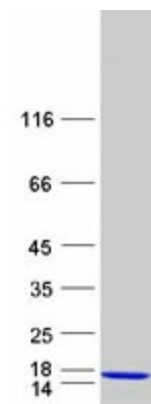
GTL3B (NATD1) (NM_152914) Human Mass Spec Standard

Product data:

Product Type:	Mass Spec Standards
Description:	C17orf103 MS Standard C13 and N15-labeled recombinant protein (NP_690878)
Species:	Human
Expression Host:	HEK293
Expression cDNA Clone or AA Sequence:	RC206333
Predicted MW:	13 kDa
Protein Sequence:	>RC206333 protein sequence Red=Cloning site Green=Tags(s) MAHSAAVPLGALEQGCPIRVEHRRRRQFTVRLNGCHDRAVLLYEYVGKRIVDLQHTEVPDAYSGRGIA KHLAKAALDFVVEEDLKAHLTCWYIQKYVKENPLPQYLRLQP TRTRPLEQKLISEEDLAANDILDYKDDDDKV
Tag:	C-Myc/DDK
Purity:	> 80% as determined by SDS-PAGE and Coomassie blue staining
Concentration:	>0.05 µg/µL as determined by microplate BCA method
Labeling Method:	Labeled with [U- 13C6, 15N4]-L-Arginine and [U- 13C6, 15N2]-L-Lysine
Buffer:	25 mM Tris-HCl, 100 mM glycine, pH 7.3
Storage:	Store at -80°C. Avoid repeated freeze-thaw cycles.
Stability:	Stable for 3 months from receipt of products under proper storage and handling conditions.
RefSeq:	NP_690878
RefSeq Size:	4787
RefSeq ORF:	339
Synonyms:	C17orf103; Gtlf3b
Locus ID:	256302
UniProt ID:	Q8N6N6
Cytogenetics:	17p11.2



[View online »](#)

Product images:

Coomassie blue staining of purified NATD1 protein (Cat# [TP306333]). The protein was produced from HEK293T cells transfected with NATD1 cDNA clone (Cat# [RC206333]) using MegaTran 2.0 (Cat# [TT210002]).