

## Product datasheet for PH306319

### LIX1 (NM\_153234) Human Mass Spec Standard

#### Product data:

Product Type:	Mass Spec Standards
Description:	LIX1 MS Standard C13 and N15-labeled recombinant protein (NP_694966)
Species:	Human
Expression Host:	HEK293
Expression cDNA Clone or AA Sequence:	RC206319
Predicted MW:	31.8 kDa
Protein Sequence:	>RC206319 protein sequence Red=Cloning site Green=Tags(s)  MDITLESLRHIIAQVLPHRDPALVFKDLNVVSMQLQEFWESKQQKAAFPSEGVVVYESLPAPGPPFVSYV TLPGGSCFGNFQCCLSRAEARRDAAKVALINSLFNELPSRRITKEFIMESVQEAVASTSGTLDDADDPST SVGAYHYMLESNMGKTMLEFQELMTIFQLLHWNGSLKALRETKCSRQEVISSYSQYSLDEKMRSHMALDW IMKERDSPGIVSQELRMALRQLEEARKAGQELRFYKEKKEILSLALTQICSDPDTSSPSDDQLSLTALCG YH  TRTRPLEQKLISEEDLAANDILDYKDDDDKV
Tag:	C-Myc/DDK
Purity:	> 80% as determined by SDS-PAGE and Coomassie blue staining
Concentration:	>0.05 µg/µL as determined by microplate BCA method
Labeling Method:	Labeled with [U- <sup>13</sup> C <sub>6</sub> , <sup>15</sup> N <sub>4</sub> ]-L-Arginine and [U- <sup>13</sup> C <sub>6</sub> , <sup>15</sup> N <sub>2</sub> ]-L-Lysine
Buffer:	25 mM Tris-HCl, 100 mM glycine, pH 7.3
Storage:	Store at -80°C. Avoid repeated freeze-thaw cycles.
Stability:	Stable for 3 months from receipt of products under proper storage and handling conditions.
RefSeq:	<a href="#">NP_694966</a>
RefSeq Size:	3979
RefSeq ORF:	846
Synonyms:	C5orf11; Lft
Locus ID:	167410

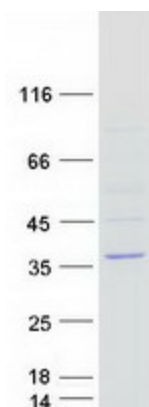


[View online »](#)

UniProt ID: [Q8N485](#)

Cytogenetics: 5q15

### Product images:



Coomassie blue staining of purified LIX1 protein (Cat# [TP306319]). The protein was produced from HEK293T cells transfected with LIX1 cDNA clone (Cat# [RC206319]) using MegaTran 2.0 (Cat# [TT210002]).