

Product datasheet for PH306292

Perilipin-1 (PLIN1) (NM_002666) Human Mass Spec Standard

Product data:

Product Type:	Mass Spec Standards
Description:	PLIN1 MS Standard C13 and N15-labeled recombinant protein (NP_002657)
Species:	Human
Expression Host:	HEK293
Expression cDNA Clone or AA Sequence:	RC206292
Predicted MW:	55.8 kDa
Protein Sequence:	>RC206292 representing NM_002666 Red=Cloning site Green=Tags(s)

MAVNKGLTLLDGDLPQENVLQRVLQLPVVSGTCECFQKTYTSTKEAHLVASVCNAYEKGVQSASSLAA
WSMEPVVRRLLSTQFTAANELACRGLDHLEEKIPALQYPPEKIASLKDITSTRLSARNISVPIASTSD
KVLGAALAGCELAWGVARDTAEFAANTRAGRLASGGADLALGSIEKVVEYLLPADKEESAPAGHQQAQE
SPKAKPSLLSRVGALTNTLSRYTVQTMARALEQGHTVAMWIPGVVPLSSLAQWGSVAMQAVSRRRSEVR
VPWLHSLAAAQEEEDHEDQTDTEGEDTEEEEELETEENKFSEVAALPGPRGLLGGVAHTLQKTLQTTISAV
TWAPAAVLGMAGRVLHLTPAPAVSSTKGRAMSLSDALKGVTDNVVDTVVHYVPLPRLSLMEPESEFRDID
NPPAEVERREAERRASGAPSAGPEPAPRLAQPRRSLRSAQSPGAPPGGLEDEVATPAAPRPGFPAVPRE
KPKRRVSDSFFRPSVMEPILGRTHYSQLRKKS

TRTRPLEQKLISEEDLAANDILDYKDDDDKV

Tag:	C-Myc/DDK
Purity:	> 80% as determined by SDS-PAGE and Coomassie blue staining
Concentration:	>0.05 µg/µL as determined by microplate BCA method
Labeling Method:	Labeled with [U- 13C6, 15N4]-L-Arginine and [U- 13C6, 15N2]-L-Lysine
Buffer:	25 mM Tris-HCl, 100 mM glycine, pH 7.3
Storage:	Store at -80°C. Avoid repeated freeze-thaw cycles.
Stability:	Stable for 3 months from receipt of products under proper storage and handling conditions.
RefSeq:	<u>NP_002657</u>
RefSeq Size:	2922
RefSeq ORF:	1566



[View online »](#)

Synonyms: FPLD4; PERI; PLIN

Locus ID: 5346

UniProt ID: [O60240](#)

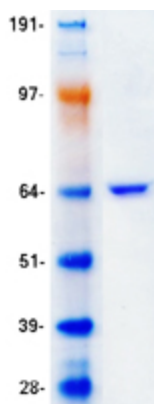
Cytogenetics: 15q26.1

Summary: The protein encoded by this gene coats lipid storage droplets in adipocytes, thereby protecting them until they can be broken down by hormone-sensitive lipase. The encoded protein is the major cAMP-dependent protein kinase substrate in adipocytes and, when unphosphorylated, may play a role in the inhibition of lipolysis. Alternatively spliced transcript variants varying in the 5' UTR, but encoding the same protein, have been found for this gene. [provided by RefSeq, Feb 2009]

Protein Families: Druggable Genome

Protein Pathways: PPAR signaling pathway

Product images:



Coomassie blue staining of purified PLIN1 protein (Cat# [TP306292]). The protein was produced from HEK293T cells transfected with PLIN1 cDNA clone (Cat# [RC206292]) using MegaTran 2.0 (Cat# [TT210002]).