

Product datasheet for PH306285

Centrin 1 (CETN1) (NM_004066) Human Mass Spec Standard

Product data:

Product Type:	Mass Spec Standards
Description:	CETN1 MS Standard C13 and N15-labeled recombinant protein (NP_004057)
Species:	Human
Expression Host:	HEK293
Expression cDNA Clone or AA Sequence:	RC206285
Predicted MW:	19.6 kDa
Protein Sequence:	>RC206285 protein sequence Red=Cloning site Green=Tags(s) MASGFKKPSAASTGQKRKVAPKPELTEDQKQEVREAFDLFDVDGSGTIDAKELKVAMRALGFEPKKEEMK KMISEVDREGTGKISFNDFLAVMTQKMSEKDTKEEILKAFRLFDDDETGKISFKNLKRVANELGENLTDE ELQEMIDEADRDGDGEVNEEEFLRIMKKTSLY TRTRPLEQKLISEEDLAANDILDYKDDDDKV
Tag:	C-Myc/DDK
Purity:	> 80% as determined by SDS-PAGE and Coomassie blue staining
Concentration:	>0.05 µg/µL as determined by microplate BCA method
Labeling Method:	Labeled with [U- ¹³ C ₆ , ¹⁵ N ₄]-L-Arginine and [U- ¹³ C ₆ , ¹⁵ N ₂]-L-Lysine
Buffer:	25 mM Tris-HCl, 100 mM glycine, pH 7.3
Storage:	Store at -80°C. Avoid repeated freeze-thaw cycles.
Stability:	Stable for 3 months from receipt of products under proper storage and handling conditions.
RefSeq:	NP_004057
RefSeq Size:	1161
RefSeq ORF:	516
Synonyms:	CEN1; CETN
Locus ID:	1068
UniProt ID:	Q12798 , A0A140VJG3



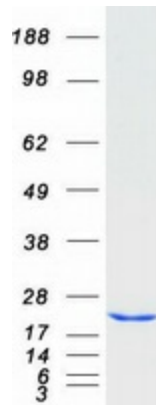
[View online »](#)

Cytogenetics: 18p11.32

Summary: The protein encoded by this gene plays important roles in the determination of centrosome position and segregation, and in the process of microtubule severing. This protein is localized to the centrosome of interphase cells, and redistributes to the region of the spindle poles during mitosis, reflecting the dynamic behavior of the centrosome during the cell cycle. [provided by RefSeq, Jan 2015]

Protein Families: Druggable Genome

Product images:



Coomassie blue staining of purified CETN1 protein (Cat# [TP306285]). The protein was produced from HEK293T cells transfected with CETN1 cDNA clone (Cat# [RC206285]) using MegaTran 2.0 (Cat# [TT210002]).