

Product datasheet for PH306279

STAM2 (NM_005843) Human Mass Spec Standard

Product data:

Product Type:	Mass Spec Standards
Description:	STAM2 MS Standard C13 and N15-labeled recombinant protein (NP_005834)
Species:	Human
Expression Host:	HEK293
Expression cDNA Clone or AA Sequence:	RC206279
Predicted MW:	58.2 kDa
Protein Sequence:	>RC206279 protein sequence Red=Cloning site Green=Tags(s)

MPLFTANPFEQDVEKATNEYNTTEDWSLIMDICKVVGSTPNGAKDCLKAIMKRVNHKVPVHALQALTLG
ACVANCGKIFHLEVCSRDFATEVRAVIKKAHPKVCEKLSLMVEWSEEFQKDPQFSLISATIKSMKEEG
ITFPPAGSQTVSAAAKNGTSSNKNKEDEIAKAIELSLQEQQHTETKSLYPSSEIQLNNKVARVYRAL
YDFEAVEDNELTFKHGEIIVLDDSDANWWKGENHRGIGLFPNSFVTTNLNIETEAADVLDLNVIDDDVE
EIKKSEPEPVYIDEDKMDRALQVLQSIDPTDSKPDSQDLLDLEDICQQMGPMIDEKLEEDRKHSELSEL
NVKVLAELELYNKLVNEAPVYSVYSLHPPAHYPPASSGVPMQTYPVQSHGGNYMGQSIHQVTVAQSYSL
GPDQIGPLRSLPPNVNSSVTAQPAQTSYLSGQDQTVSNPTMYNQSNLQSATGTTAYTQQMGMSVDMSSY
QNTTSNLPQLAGFPVTVPAHPVAQQHTNYHQPLL

TRTRPLEQKLI SEEDLAANDILDYKDDDDKV

Tag:	C-Myc/DDK
Purity:	> 80% as determined by SDS-PAGE and Coomassie blue staining
Concentration:	>0.05 µg/µL as determined by microplate BCA method
Labeling Method:	Labeled with [U- ¹³ C ₆ , ¹⁵ N ₄]-L-Arginine and [U- ¹³ C ₆ , ¹⁵ N ₂]-L-Lysine
Buffer:	25 mM Tris-HCl, 100 mM glycine, pH 7.3
Storage:	Store at -80°C. Avoid repeated freeze-thaw cycles.
Stability:	Stable for 3 months from receipt of products under proper storage and handling conditions.
RefSeq:	<u>NP_005834</u>
RefSeq Size:	5701
RefSeq ORF:	1575



[View online »](#)

Synonyms: Hbp; STAM2A; STAM2B

Locus ID: 10254

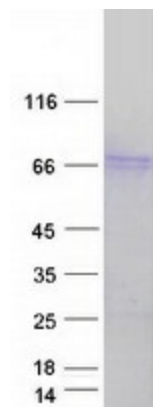
UniProt ID: [O75886](#)

Cytogenetics: 2q23.3

Summary: The protein encoded by this gene is closely related to STAM, an adaptor protein involved in the downstream signaling of cytokine receptors, both of which contain a SH3 domain and the immunoreceptor tyrosine-based activation motif (ITAM). Similar to STAM, this protein acts downstream of JAK kinases, and is phosphorylated in response to cytokine stimulation. This protein and STAM thus are thought to exhibit compensatory effects on the signaling pathway downstream of JAK kinases upon cytokine stimulation. [provided by RefSeq, Jul 2008]

Protein Pathways: Endocytosis, Jak-STAT signaling pathway

Product images:



Coomassie blue staining of purified STAM2 protein (Cat# [TP306279]). The protein was produced from HEK293T cells transfected with STAM2 cDNA clone (Cat# [RC206279]) using MegaTran 2.0 (Cat# [TT210002]).