

Product datasheet for PH306269

SCHIP1 (NM_014575) Human Mass Spec Standard

Product data:

Product Type:	Mass Spec Standards
Description:	SCHIP1 MS Standard C13 and N15-labeled recombinant protein (NP_055390)
Species:	Human
Expression Host:	HEK293
Expression cDNA Clone or AA Sequence:	RC206269
Predicted MW:	53.4 kDa
Protein Sequence:	>RC206269 protein sequence Red=Cloning site Green=Tags(s)

MERSGQRVTTWDCDQGKHSDSDYREDGMDLGS DAGSSSSSRASSQSNSTKVTPCSECKSSSSPGGSLDL
VSALEDYEEFPVYQKKVIDEWAPEEDGEEEEEEDERDQRYRDDRSPAREPGDVSARTRSGGGGRSAT
TAMPPVPNGNLHQHDPQDLRHNGNVVAVGRPSCSRGRRAIQKQPAGGRRSGRGAAGGLCLQPPDGGT
CVPEEPPVPPMDWEALEKHLAQLFREQEVNRNQGQARTNSTSAQKNERESIRQKLALGSFFDDGPGIYTS
CSKSGKPSLSSRLQSGMNLQICFVNDSGSDKSDADDSKTETSLDTPLSPMSKQSSSYSDRDTTEEESES
LDDMDFLTRQKKLQAEAKMALAMAKPMKMQVEVEKQNRKSPVADLLPHMPHISECLMKRSLKPTDLRD
MTIGQLQVIVNDLHSQIESLNEELVQLLLIRDELHTEQDAMLVDIEDLTRHAESQQKHMAEKMPAK

TRTRPLEQKLI SEEDLAANDILDYKDDDDKV

Tag:	C-Myc/DDK
Purity:	> 80% as determined by SDS-PAGE and Coomassie blue staining
Concentration:	>0.05 µg/µL as determined by microplate BCA method
Labeling Method:	Labeled with [U- 13C6, 15N4]-L-Arginine and [U- 13C6, 15N2]-L-Lysine
Buffer:	25 mM Tris-HCl, 100 mM glycine, pH 7.3
Storage:	Store at -80°C. Avoid repeated freeze-thaw cycles.
Stability:	Stable for 3 months from receipt of products under proper storage and handling conditions.
RefSeq:	<u>NP_055390</u>
RefSeq Size:	2647
RefSeq ORF:	1392
Synonyms:	SCHIP-1



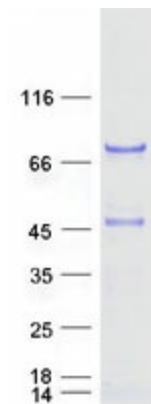
[View online »](#)

Locus ID: 29970

UniProt ID: [Q9P0W5](#), [P0DPB3](#)

Cytogenetics: 3q25.32-q25.33

Product images:



Coomassie blue staining of purified SCHIP1 protein (Cat# [TP306269]). The protein was produced from HEK293T cells transfected with SCHIP1 cDNA clone (Cat# [RC206269]) using MegaTran 2.0 (Cat# [TT210002]).