

Product datasheet for PH306256

GIPC (GIPC2) (NM_017655) Human Mass Spec Standard

Product data:

Product Type:	Mass Spec Standards
Description:	GIPC2 MS Standard C13 and N15-labeled recombinant protein (NP_060125)
Species:	Human
Expression Host:	HEK293
Expression cDNA Clone or AA Sequence:	RC206256
Predicted MW:	34.3 kDa
Protein Sequence:	>RC206256 protein sequence Red=Cloning site Green=Tags(s) MPLKLRGKKKAKSKETAGLVEGEPTGAGGGSLSASRAPARRLVFHAQLAHGSATGRVEGFSSIQELYAQI AGAFEISPSEILYCTLNTPKIDMERLLGGQLGLEDFIFAHVKGIEKEVNVYKSEDSLGLTITDNGVGYAF IKRIKDGVIDSVKTIKVDHIESINGENIVGWRHYDVAKKLELKEELFTMKLIEPKKAFFIEPRSKA GKSSGEKIGCGRATLRLRSKGPATVEEMPSETKAKAIEKIDDVLELYMGIRDIDLATTFEAGKDKVNP EFAVALDETLGDFAFPDEFVFDVWGVIGDAKRRGL TRTRPLEQKLISEEDLAANDILDYKDDDDKV
Tag:	C-Myc/DDK
Purity:	> 80% as determined by SDS-PAGE and Coomassie blue staining
Concentration:	>0.05 µg/µL as determined by microplate BCA method
Labeling Method:	Labeled with [U- ¹³ C ₆ , ¹⁵ N ₄]-L-Arginine and [U- ¹³ C ₆ , ¹⁵ N ₂]-L-Lysine
Buffer:	25 mM Tris-HCl, 100 mM glycine, pH 7.3
Storage:	Store at -80°C. Avoid repeated freeze-thaw cycles.
Stability:	Stable for 3 months from receipt of products under proper storage and handling conditions.
RefSeq:	<u>NP_060125</u>
RefSeq Size:	2838
RefSeq ORF:	945
Synonyms:	SEMCAP-2; SEMCAP2
Locus ID:	54810

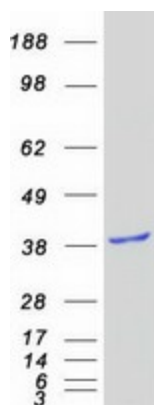


[View online »](#)

UniProt ID: [Q8TF65](#), [A0A384P5H2](#)

Cytogenetics: 1p31.1

Product images:



Coomassie blue staining of purified GIPC2 protein (Cat# [TP306256]). The protein was produced from HEK293T cells transfected with GIPC2 cDNA clone (Cat# [RC206256]) using MegaTran 2.0 (Cat# [TT210002]).