

Product datasheet for PH306233

TEM7 (PLXDC1) (NM_020405) Human Mass Spec Standard

Product data:

| | |
|---------------------------------------|--|
| Product Type: | Mass Spec Standards |
| Description: | PLXDC1 MS Standard C13 and N15-labeled recombinant protein (NP_065138) |
| Species: | Human |
| Expression Host: | HEK293 |
| Expression cDNA Clone or AA Sequence: | RC206233 |
| Predicted MW: | 55.8 kDa |
| Protein Sequence: | >RC206233 protein sequence Red=Cloning site Green=Tags(s) |

MRGELWLLVLLVREAAARALSPQPGAGHDEGPGSGWAAKGTVRGWNRRAESP GHVSEPDRTQLSQDLGGG
TLAMDTLPDNRTRVVEDNHSYYVSRLYGPSEPHSRELWVDVAEANRSQVKIHTILSNTHRQASRVLSFD
FPFYGHPLRQITMATGGFIFMGDVIHRMLTATQYVAPLMANFNPGYSDNSTVVYFDNGTVFVVQWDHVYL
QGWEKGSFTFQAALHHDGRIVFAYKEIPMSVPEISSSQHPVKTGLSDAFMILNPSDPVPESSRRRSIFEY
HRIELDPSKVTSMASAVEFTPLPTCLQHRSCDACMSSDLTFNCWCHVLQRCSSGFDRYRQEWMDYGCAQE
AEGRMCEDFQDEHDHSASPDTSFSPYDGLTTTSSSLFIDSLTTEDDTKLNPNYAGGDGLQNNLSPKTKGT
PVHLGTIVGIVLAVLLVAAIILAGIYINGHPTSNAALFFIERRPHHPAMKFRSHPDHSTYAEVEPSGHE
KEGFMEAEQC

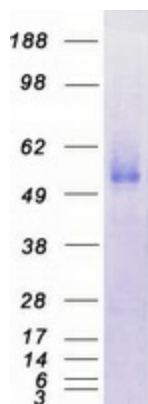
TRTRPLEQKLI SEEDLAANDILDYKDDDDKV

| | |
|------------------|--|
| Tag: | C-Myc/DDK |
| Purity: | > 80% as determined by SDS-PAGE and Coomassie blue staining |
| Concentration: | >0.05 µg/µL as determined by microplate BCA method |
| Labeling Method: | Labeled with [U- ¹³ C ₆ , ¹⁵ N ₄]-L-Arginine and [U- ¹³ C ₆ , ¹⁵ N ₂]-L-Lysine |
| Buffer: | 25 mM Tris-HCl, 100 mM glycine, pH 7.3 |
| Storage: | Store at -80°C. Avoid repeated freeze-thaw cycles. |
| Stability: | Stable for 3 months from receipt of products under proper storage and handling conditions. |
| RefSeq: | <u>NP_065138</u> |
| RefSeq Size: | 6271 |
| RefSeq ORF: | 1500 |



[View online »](#)

| | |
|-------------------|---|
| Synonyms: | TEM3; TEM7 |
| Locus ID: | 57125 |
| UniProt ID: | Q8IUUK5 |
| Cytogenetics: | 17q12 |
| Summary: | Plays a critical role in endothelial cell capillary morphogenesis.[UniProtKB/Swiss-Prot Function] |
| Protein Families: | Druggable Genome, Secreted Protein, Transmembrane |

Product images:

Coomassie blue staining of purified PLXDC1 protein (Cat# [TP306233]). The protein was produced from HEK293T cells transfected with PLXDC1 cDNA clone (Cat# [RC206233]) using MegaTran 2.0 (Cat# [TT210002]).