

Product datasheet for PH306192

ARF3 (NM_001659) Human Mass Spec Standard

Product data:

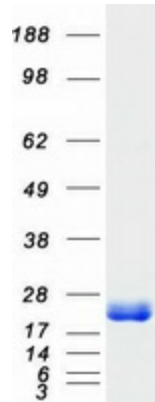
Product Type:	Mass Spec Standards
Description:	ARF3 MS Standard C13 and N15-labeled recombinant protein (NP_001650)
Species:	Human
Expression Host:	HEK293
Expression cDNA Clone or AA Sequence:	RC206192
Predicted MW:	20.6 kDa
Protein Sequence:	>RC206192 protein sequence Red=Cloning site Green=Tags(s) MGNIFGNLLKSLIGKKEMRILMVGLDAAGKTTILYKLLKGEIVTTIPTIGFNVETVEYKNISFTVWDVGG QDKIRPLWRHYFQNTQGLIFVVDSDNRERVNEAREELMRMLAEDELRDVLLVLFANKQDLPNAMNAEIT DKLGLHSLRHRNWYIQATCATSGDGLYEGLDWLANQLKNKK TRTRPLEQKLISEEDLAANDILDYKDDDDKV
Tag:	C-Myc/DDK
Purity:	> 80% as determined by SDS-PAGE and Coomassie blue staining
Concentration:	>0.05 µg/µL as determined by microplate BCA method
Labeling Method:	Labeled with [U- 13C6, 15N4]-L-Arginine and [U- 13C6, 15N2]-L-Lysine
Buffer:	25 mM Tris-HCl, 100 mM glycine, pH 7.3
Storage:	Store at -80°C. Avoid repeated freeze-thaw cycles.
Stability:	Stable for 3 months from receipt of products under proper storage and handling conditions.
RefSeq:	NP_001650
RefSeq Size:	3556
RefSeq ORF:	543
Locus ID:	377
UniProt ID:	P61204 , A0A024R0Y6
Cytogenetics:	12q13.12



[View online »](#)

Summary:

ADP-ribosylation factor 3 (ARF3) is a member of the human ARF gene family. These genes encode small guanine nucleotide-binding proteins that stimulate the ADP-ribosyltransferase activity of cholera toxin and play a role in vesicular trafficking and as activators of phospholipase D. The gene products include 6 ARF proteins and 11 ARF-like proteins and constitute 1 family of the RAS superfamily. The ARF proteins are categorized as class I (ARF1, ARF2, and ARF3), class II (ARF4 and ARF5) and class III (ARF6) and members of each class share a common gene organization. The ARF3 gene contains five exons and four introns. [provided by RefSeq, Jul 2008]

Product images:

Coomassie blue staining of purified ARF3 protein (Cat# [TP306192]). The protein was produced from HEK293T cells transfected with ARF3 cDNA clone (Cat# [RC206192]) using MegaTran 2.0 (Cat# [TT210002]).