

## Product datasheet for PH306187

### TXNDC (TMX1) (NM\_030755) Human Mass Spec Standard

#### Product data:

Product Type:	Mass Spec Standards
Description:	TMX1 MS Standard C13 and N15-labeled recombinant protein (NP_110382)
Species:	Human
Expression Host:	HEK293
Expression cDNA Clone or AA Sequence:	RC206187
Predicted MW:	31.8 kDa
Protein Sequence:	>RC206187 protein sequence Red=Cloning site Green=Tags(s)  MAPSGSLAVPLAVMVPLLWGAPWTHGRRSNVRVITDENWRELLEGDWMIEFYAPWCPACQNLQPEWESFA EWGEDLEVNIKVDVTEQPGLSGRFIINALPTIYHCKDGEFRRYQGPRTKKDFINFISDKEWKSIEPVSS WFGPGSVLMSSMSALFQLSMWIRTCHNYFIEDLGLPVWGSYTVFALATLFSGLLLGLCMIFVADCLCPSK RRRPQYPYPYPSKLLSESAQPLKKVEEQEADEEDVSEEEAESKEGTNKDFPQNAIRQRSLGPSLATDKS  TRTRPLEQKLI SEEDLAANDILDYKDDDDKV
Tag:	C-Myc/DDK
Purity:	> 80% as determined by SDS-PAGE and Coomassie blue staining
Concentration:	>0.05 µg/µL as determined by microplate BCA method
Labeling Method:	Labeled with [U- 13C6, 15N4]-L-Arginine and [U- 13C6, 15N2]-L-Lysine
Buffer:	25 mM Tris-HCl, 100 mM glycine, pH 7.3
Storage:	Store at -80°C. Avoid repeated freeze-thaw cycles.
Stability:	Stable for 3 months from receipt of products under proper storage and handling conditions.
RefSeq:	<a href="#">NP_110382</a>
RefSeq Size:	4119
RefSeq ORF:	840
Synonyms:	PDIA11; TMX; TXNDC; TXNDC1
Locus ID:	81542
UniProt ID:	<a href="#">Q9H3N1</a>



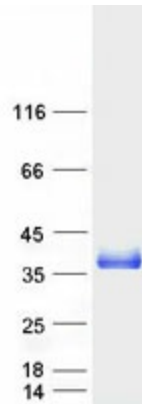
[View online »](#)

**Cytogenetics:** 14q22.1

**Summary:** This gene encodes a member of the disulfide isomerase (PDI) family of endoplasmic reticulum (ER) proteins that catalyze protein folding and thiol-disulfide interchange reactions. The encoded protein has an N-terminal ER-signal sequence, a catalytically active thioredoxin domain, and one transmembrane domain. Unlike most members of this gene family, it lacks a C-terminal ER-retention sequence. The mature membrane-bound protein can both oxidize and reduce disulfide bonds and acts selectively on membrane-associated polypeptides. [provided by RefSeq, Jan 2017]

**Protein Families:** Druggable Genome, Transcription Factors, Transmembrane

**Product images:**



Coomassie blue staining of purified TMX1 protein (Cat# [TP306187]). The protein was produced from HEK293T cells transfected with TMX1 cDNA clone (Cat# [RC206187]) using MegaTran 2.0 (Cat# [TT210002]).