

Product datasheet for PH306177

KCTD21 (NM_001029859) Human Mass Spec Standard

Product data:

Product Type:	Mass Spec Standards
Description:	KCTD21 MS Standard C13 and N15-labeled recombinant protein (NP_001025030)
Species:	Human
Expression Host:	HEK293
Expression cDNA Clone or AA Sequence:	RC206177
Predicted MW:	29.6 kDa
Protein Sequence:	>RC206177 protein sequence Red =Cloning site Green =Tags(s)

MSDPITLNVGGKLYTTSLATLTSFPDSMLGAMFSGKMPTKRDSQGNCFIDRDGKVFRYILNFLRTSHLDL
 PEDFQEMGLLRREADFYQVQPLIEALQEKEVELSKAEKNAMLNITLNQRVQTVHFTVREAPQIYSLSSSS
 MEVFNANIFSTCLFLKLLGSKLFYCSNGNLSSITSHLQDPNHLTDWVANVEGLPEEEYTKQNLKRLWV
 VPANKQINSFQVFVEEVKIALSDGFCIDSSPHALDFMNNKIIRLIRYR

TRTRPLEQKLISEEDLAANDILDYKDDDDKV

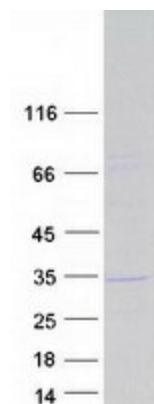
Tag:	C-Myc/DDK
Purity:	> 80% as determined by SDS-PAGE and Coomassie blue staining
Concentration:	>0.05 µg/µL as determined by microplate BCA method
Labeling Method:	Labeled with [U- ¹³ C ₆ , ¹⁵ N ₄]-L-Arginine and [U- ¹³ C ₆ , ¹⁵ N ₂]-L-Lysine
Buffer:	25 mM Tris-HCl, 100 mM glycine, pH 7.3
Storage:	Store at -80°C. Avoid repeated freeze-thaw cycles.
Stability:	Stable for 3 months from receipt of products under proper storage and handling conditions.
RefSeq:	NP_001025030
RefSeq Size:	3396
RefSeq ORF:	780
Synonyms:	KCASH2
Locus ID:	283219
UniProt ID:	Q4G0X4


[View online »](#)

Cytogenetics: 11q14.1

Summary: Probable substrate-specific adapter of a BCR (BTB-CUL3-RBX1) E3 ubiquitin-protein ligase complex mediating the ubiquitination and subsequent proteasomal degradation of target proteins. Promotes the ubiquitination of HDAC1. Can function as antagonist of the Hedgehog pathway by affecting the nuclear transfer of transcription factor GLI1; the function probably occurs via HDAC1 down-regulation, keeping GLI1 acetylated and inactive. Inhibits cell growth and tumorigenicity of medulloblastoma (MDB) (PubMed:21472142).[UniProtKB/Swiss-Prot Function]

Product images:



Coomassie blue staining of purified KCTD21 protein (Cat# [TP306177]). The protein was produced from HEK293T cells transfected with KCTD21 cDNA clone (Cat# [RC206177]) using MegaTran 2.0 (Cat# [TT210002]).