

## Product datasheet for PH306165

### epsilon Tubulin (TUBE1) (NM\_016262) Human Mass Spec Standard

#### Product data:

Product Type:	Mass Spec Standards
Description:	TUBE1 MS Standard C13 and N15-labeled recombinant protein (NP_057346)
Species:	Human
Expression Host:	HEK293
Expression cDNA Clone or AA Sequence:	RC206165
Predicted MW:	52.9 kDa
Protein Sequence:	>RC206165 protein sequence Red=Cloning site Green=Tags(s)

MTQSVVVQVQGCGNQIGCCFWDLALREHAAVNQKGIYDEAISSFFRNVDTRVVGDDGGSISKGKICSLKAR  
AVLIDMEEGVVNEILQGPLRDVFDTKQLITDISGSGNNWAVGHKVFVGSLYQDQILEKFRKSAEHCDLQC  
FFIIHSMGGGTGSGLGTFLLKVLEDEFPEVYRFVTSIYPSGEDDVITSPYNSILAMKELNEHADCVLPID  
NQSLFDIISKIDLMVNSGKLGTTVKPKSLVTSSSGALKKQHKKPFAMNNIVANLLLNLTSARFEGSLN  
MDLNEISMNLVFPQLHYLVSSLTPLYTLTDVNIIPRRLDQMFSDAFSKDHQLLRADPKHSLYLACALMV  
RGNVQISDLRRNIERLKPQLFVSWNQEGWKTSLCSVPPVGHSHSLLALANNTCVKPTFMELKERFMRLY  
KKKAHLHHYLQVEGMEESCFTAVSSLSALIQEYDQLDATKNMPVQDLPRLSIAM

TRTRPLEQKLISEEDLAANDILDYKDDDDKV

Tag:	C-Myc/DDK
Purity:	> 80% as determined by SDS-PAGE and Coomassie blue staining
Concentration:	>0.05 µg/µL as determined by microplate BCA method
Labeling Method:	Labeled with [U- <sup>13</sup> C <sub>6</sub> , <sup>15</sup> N <sub>4</sub> ]-L-Arginine and [U- <sup>13</sup> C <sub>6</sub> , <sup>15</sup> N <sub>2</sub> ]-L-Lysine
Buffer:	25 mM Tris-HCl, 100 mM glycine, pH 7.3
Storage:	Store at -80°C. Avoid repeated freeze-thaw cycles.
Stability:	Stable for 3 months from receipt of products under proper storage and handling conditions.
RefSeq:	<u><a href="#">NP_057346</a></u>
RefSeq Size:	2314
RefSeq ORF:	1425
Synonyms:	dj142L7.2; TUBE



[View online »](#)

Locus ID: 51175

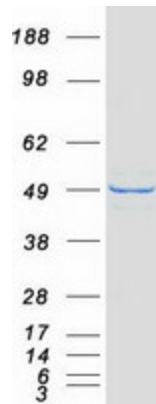
UniProt ID: [Q9UJT0](#)

Cytogenetics: 6q21

**Summary:** This gene encodes a member of the tubulin superfamily. This protein localizes to the centriolar sub-distal appendages that are associated with the older of the two centrioles after centrosome duplication. This protein plays a central role in organization of the microtubules during centriole duplication. A pseudogene of this gene is found on chromosome 5.[provided by RefSeq, Jan 2009]

**Protein Families:** Druggable Genome

### Product images:



Coomassie blue staining of purified TUBE1 protein (Cat# [TP306165]). The protein was produced from HEK293T cells transfected with TUBE1 cDNA clone (Cat# [RC206165]) using MegaTran 2.0 (Cat# [TT210002]).