

## Product datasheet for PH306163

### EXOC6 (NM\_019053) Human Mass Spec Standard

#### Product data:

Product Type:	Mass Spec Standards
Description:	EXOC6 MS Standard C13 and N15-labeled recombinant protein (NP_061926)
Species:	Human
Expression Host:	HEK293
Expression cDNA Clone or AA Sequence:	RC206163
Predicted MW:	93.6 kDa
Protein Sequence:	>RC206163 protein sequence Red=Cloning site Green=Tags(s)

MAENSESLGTVPEHERILQEIESTDTACVGPTRLRSVYDDQPNAHKKFMEKLDACIRNHDKEIEKMCNFHH  
QGFVDAITELLKVRTDAEKLKQVQTDNRRFQDAGKEVI VHTEDIIRCRIQQRNITTVVEKLQLCCLPVLE  
MYSKLEQMSAKRYYSALKTMEQLENVYFPWVSQYRQCQLMIENL PKLREDIKEISMSDLKDFLESIRKH  
SDKIGETAMKQAQHQTFSVSLQKQNKMKFGKNMYINRDRIPERNETVLKHSLEEDENEEIILTVQDL  
VDFSPVYRCLHIYSVLGDEETFENYYRQRKKQARLVLPQSNMHETVDGYRRYFTQIVGFFVVEDHILH  
VTQGLVTRAYTDELWNMALSKIIAVLRAHSSYCTDPDLVLELKNLIVIFADTLQGYGFPVNRLLFDLLFEI  
RDQYNETLLKKWAGVFRDIFEDNYSPIPVVNEEEYKIVISKFPFQDPDEKQSFPPKFPMSQSVPHIYI  
QVKEFIYASLKFSESLHRSSTEIDMRLKSTNLLLTRTLSSCLNLIIRKPHIGLTELQIINTTHLEQA  
CKYLEDFITNITNISQETVHTTRLYGLSTFKDARHAAEGEITYTKLNQKIDEFVQLADYDWTMSEPDGRAS  
GYLMDLINFLRSIFQVFTLPGKVAQTACMSACQHLSTSLMQMLLDSELKQISMGAVQQFNLDVIQCELF  
ASSEPVPGFQGDTLQLAFIDLRQLLDLFMVWDWSTYLADYGPASKYLRVNPNTALTLLEKMKDTSKKN  
IFAQFGKNDRDKQLIETVVKQLRSLVNGMSQHM

TRTRPLEQKLI SEEDLAANDILDYKDDDDKV

Tag:	C-Myc/DDK
Purity:	> 80% as determined by SDS-PAGE and Coomassie blue staining
Concentration:	>0.05 µg/µL as determined by microplate BCA method
Labeling Method:	Labeled with [U- <sup>13</sup> C <sub>6</sub> , <sup>15</sup> N <sub>4</sub> ]-L-Arginine and [U- <sup>13</sup> C <sub>6</sub> , <sup>15</sup> N <sub>2</sub> ]-L-Lysine
Buffer:	25 mM Tris-HCl, 100 mM glycine, pH 7.3
Storage:	Store at -80°C. Avoid repeated freeze-thaw cycles.
Stability:	Stable for 3 months from receipt of products under proper storage and handling conditions.
RefSeq:	<u><a href="#">NP_061926</a></u>

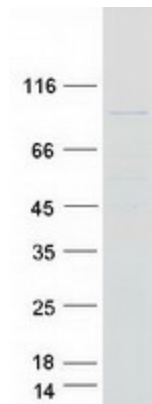


[View online »](#)

RefSeq Size:	3637
RefSeq ORF:	2412
Synonyms:	EXOC6A; SEC15; SEC15L; SEC15L1; SEC15L3; Sec15p
Locus ID:	54536
UniProt ID:	<a href="#">Q8TAG9</a> , <a href="#">B2RDH5</a>
Cytogenetics:	10q23.33

**Summary:** The protein encoded by this gene is highly similar to the *Saccharomyces cerevisiae* SEC15 gene product, which is essential for vesicular traffic from the Golgi apparatus to the cell surface in yeast. It is one of the components of a multiprotein complex required for exocytosis. The 5' portion of this gene and two neighboring cytochrome p450 genes are included in a deletion that results in an autosomal-dominant form of nonsyndromic optic nerve aplasia (ONA). Alternative splicing and the use of alternative promoters results in multiple transcript variants. A paralogous gene encoding a similar protein is present on chromosome 2. [provided by RefSeq, Jan 2016]

### Product images:



Coomassie blue staining of purified EXOC6 protein (Cat# [TP306163]). The protein was produced from HEK293T cells transfected with EXOC6 cDNA clone (Cat# [RC206163]) using MegaTran 2.0 (Cat# [TT210002]).