

## Product datasheet for PH306144

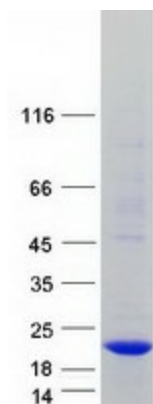
### C14orf48 (LINC00521) (NM\_152777) Human Mass Spec Standard

#### Product data:

|                                       |   |
|---------------------------------------|---|
| Product Type:                         | Mass Spec Standards   |
| Description:                          | C14orf48 MS Standard C13 and N15-labeled recombinant protein (NP_689990)  |
| Species:                              | Human   |
| Expression Host:                      | HEK293  |
| Expression cDNA Clone or AA Sequence: | RC206144  |
| Predicted MW:                         | 15.6 kDa  |
| Protein Sequence:                     | >RC206144 representing NM_152777<br>Red=Cloning site Green=Tags(s)<br><br>MDTGQRADPSNPGDKEGDLQGLWQELYQLQAKQKCLKREVEKHKLFEDYLIKVLEKIPEGCTGWEEPEEV<br>LVEATVKHYGKLFASQDTQKRLEAFCQMIQAVHRSLESLEEDHRALIASRSGCVSCRRSATASRSSGGS<br><br>TRTRPLEQKLI SEEDLAANDILDYKDDDDKV |
| Tag:                                  | C-Myc/DDK   |
| Purity:                               | > 80% as determined by SDS-PAGE and Coomassie blue staining   |
| Concentration:                        | >0.05 µg/µL as determined by microplate BCA method  |
| Labeling Method:                      | Labeled with [U- 13C6, 15N4]-L-Arginine and [U- 13C6, 15N2]-L-Lysine  |
| Buffer:                               | 25 mM Tris-HCl, 100 mM glycine, pH 7.3  |
| Storage:                              | Store at -80°C. Avoid repeated freeze-thaw cycles.  |
| Stability:                            | Stable for 3 months from receipt of products under proper storage and handling conditions.  |
| RefSeq:                               | <a href="#">NP_689990</a>   |
| RefSeq Size:                          | 1290  |
| RefSeq ORF:                           | 420   |
| Synonyms:                             | MGC33356, c14_5713  |
| Locus ID:                             | 256369  |
| Cytogenetics:                         | 14q32.12  |



[View online »](#)

**Product images:**

Coomassie blue staining of purified C14orf48 protein (Cat# [TP306144]). The protein was produced from HEK293T cells transfected with C14orf48 cDNA clone (Cat# [RC206144]) using MegaTran 2.0 (Cat# [TT210002]).