

## Product datasheet for PH306131

### GPD1L (NM\_015141) Human Mass Spec Standard

#### Product data:

Product Type:	Mass Spec Standards
Description:	GPD1L MS Standard C13 and N15-labeled recombinant protein (NP_055956)
Species:	Human
Expression Host:	HEK293
Expression cDNA Clone or AA Sequence:	RC206131
Predicted MW:	38.4 kDa
Protein Sequence:	>RC206131 protein sequence Red=Cloning site Green=Tags(s)
	MAAAPLKVCIVGSGNWGS AVAKIIGNNVKKLQKF ASTVKMWFEE TVNGRKLTDIINNDHENVKYLPGHK LPENNVAMSNLSEAVQDADLLVFVIPHQFIHRICDEITGRVPPKALGITLIKGIDEGPEGLKLISDIIRE KMGIDISVLMGANIANEVAAEKFCETTIGSKVMENGLLFKELLQTPNFRITVDDADTVELCGALKNIVA VGAGFCDLRCGDNTKAAVIRLGLMEMIAFARIFCKGQVSTATFLESCGVADLITTCYGGRRNRVAEFA RTGKTIEELEKEMLNGQKLQGPQ TSAEVYRILKQKGLLDKFLFTAVYQICYESRPVQEMLSCLQSHPEH T
	TRTRPLEQKLI SEEDLAANDILDYKDDDDKV
Tag:	C-Myc/DDK
Purity:	> 80% as determined by SDS-PAGE and Coomassie blue staining
Concentration:	>0.05 µg/µL as determined by microplate BCA method
Labeling Method:	Labeled with [U- <sup>13</sup> C <sub>6</sub> , <sup>15</sup> N <sub>4</sub> ]-L-Arginine and [U- <sup>13</sup> C <sub>6</sub> , <sup>15</sup> N <sub>2</sub> ]-L-Lysine
Buffer:	25 mM Tris-HCl, 100 mM glycine, pH 7.3
Storage:	Store at -80°C. Avoid repeated freeze-thaw cycles.
Stability:	Stable for 3 months from receipt of products under proper storage and handling conditions.
RefSeq:	<a href="#">NP_055956</a>
RefSeq Size:	4068
RefSeq ORF:	1053
Synonyms:	GPD1-L
Locus ID:	23171



[View online »](#)

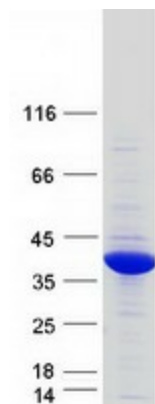
UniProt ID: [Q8N335](#)

Cytogenetics: 3p22.3

**Summary:** The protein encoded by this gene catalyzes the conversion of sn-glycerol 3-phosphate to glycerone phosphate. The encoded protein is found in the cytoplasm, associated with the plasma membrane, where it binds the sodium channel, voltage-gated, type V, alpha subunit (SCN5A). Defects in this gene are a cause of Brugada syndrome type 2 (BRS2) as well as sudden infant death syndrome (SIDS). [provided by RefSeq, Jul 2010]

**Protein Pathways:** Glycerophospholipid metabolism

### Product images:



Coomassie blue staining of purified GPD1L protein (Cat# [TP306131]). The protein was produced from HEK293T cells transfected with GPD1L cDNA clone (Cat# [RC206131]) using MegaTran 2.0 (Cat# [TT210002]).