

## Product datasheet for PH306124

### KCNF1 (NM\_002236) Human Mass Spec Standard

#### Product data:

Product Type:	Mass Spec Standards
Description:	KCNF1 MS Standard C13 and N15-labeled recombinant protein (NP_002227)
Species:	Human
Expression Host:	HEK293
Expression cDNA Clone or AA Sequence:	RC206124
Predicted MW:	55.6 kDa
Protein Sequence:	>RC206124 protein sequence Red=Cloning site Green=Tags(s)

MDGSGERSLPEPGSQSSAASDDIEIVVNVGGVRQVLYGDLLSQYPETRLAELINCLAGGYDTIFSLCDDY  
DPGKREFYFDRDPDAFKCVIEVYFGEVHMKKGICPICFKNEMDFWKVDLKFLLDCCCKSHLSEKREELEE  
IARRVQLILDDLGVDAEGRWRRRCQKCVWKFLEKPESSCPARVVAVLSFLLILVSSVVMCMGTIPELQVL  
DAEGRVHEPTLENVETACIGWFTLEYLLRLFSSPNKLHFALSFMNIVDVLAILPFYVSLTLTHLGARM  
ELTNVQQAVQALRIMRIARIFKLARHSSGLQTLTYALKRSFKELGLLLMYLAVGIFVFSALGYTMEQSH  
ETLFSIPQSFWWAITMTTVGYGDIYPKTTLGKLNAAISFLCGVIAIALPIHPIINNFVRYYNKQRVLE  
TAAKHELELMELNSSSGGEGKTGGRSDLDNLPPEPAGKEAPSCSSRLKLSHSDTFIPLLTEEKHHRTRL  
QSK

TRTRPLEQKLISEEDLAANDILDYKDDDDKV

Tag:	C-Myc/DDK
Purity:	> 80% as determined by SDS-PAGE and Coomassie blue staining
Concentration:	>0.05 µg/µL as determined by microplate BCA method
Labeling Method:	Labeled with [U- <sup>13</sup> C <sub>6</sub> , <sup>15</sup> N <sub>4</sub> ]-L-Arginine and [U- <sup>13</sup> C <sub>6</sub> , <sup>15</sup> N <sub>2</sub> ]-L-Lysine
Buffer:	25 mM Tris-HCl, 100 mM glycine, pH 7.3
Storage:	Store at -80°C. Avoid repeated freeze-thaw cycles.
Stability:	Stable for 3 months from receipt of products under proper storage and handling conditions.
RefSeq:	<u>NP_002227</u>
RefSeq Size:	2304
RefSeq ORF:	1482



[View online »](#)

**Synonyms:** IK8; KCNF; kH1; KV5.1

**Locus ID:** 3754

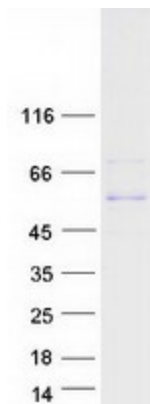
**UniProt ID:** [Q9H3M0](#)

**Cytogenetics:** 2p25.1

**Summary:** Voltage-gated potassium (Kv) channels represent the most complex class of voltage-gated ion channels from both functional and structural standpoints. Their diverse functions include regulating neurotransmitter release, heart rate, insulin secretion, neuronal excitability, epithelial electrolyte transport, smooth muscle contraction, and cell volume. This gene encodes a member of the potassium channel, voltage-gated, subfamily F. This gene is intronless and expressed in all tissues tested, including the heart, skeletal muscle, brain, kidney, and pancreas. [provided by RefSeq, Jul 2008]

**Protein Families:** Druggable Genome, Ion Channels: Potassium, Transmembrane

### Product images:



Coomassie blue staining of purified KCNF1 protein (Cat# [TP306124]). The protein was produced from HEK293T cells transfected with KCNF1 cDNA clone (Cat# [RC206124]) using MegaTran 2.0 (Cat# [TT210002]).