

Product datasheet for PH306121

GOT1L1 (NM_152413) Human Mass Spec Standard

Product data:

Product Type:	Mass Spec Standards
Description:	GOT1L1 MS Standard C13 and N15-labeled recombinant protein (NP_689626)
Species:	Human
Expression Host:	HEK293
Expression cDNA Clone or AA Sequence:	RC206121
Predicted MW:	47.2 kDa
Protein Sequence:	>RC206121 protein sequence Red=Cloning site Green=Tags(s)

MPTLSVFM DVPLAHKLEGSLLKTYKQDDYPNKIFLAYRVCMTNEGHPWVSLVVQKTRLQISQDPSLNYEY
LPTMGLKSF IQASLALLFGKHSQAIVENRVGGVHTVGD SGAFQLGVQFLRAWHKDARIVYI ISSQKELHG
LVFQDMGFTVYEYSVWDPKKLCMDPDILLNVVEQIPHGCVLVMGNIIDCKLTPSGWAKLMSMIKSKQIFP
FFDIPCQGLYTSGLEEDTRILQYFVSQGF EFFCSQSLSKNFGIYDEGVGMLVVVA VNNQQLLCVLSQLEG
LAQALWLNPPNTGARVITSILCNPALLGEWKQSLKEVVENIMLTKEKVKEKLQLLGT PGSWGHITEQSQT
HGYLGLNSQQVEYLVRKKHIYIPKNGQINFSCINANNINYITEGINEAVLLTESSEMCLPKEKKT LIGIK
L

TRTRPLEQKLI SEEDLAANDILDYKDDDDKV

Tag:	C-Myc/DDK
Purity:	> 80% as determined by SDS-PAGE and Coomassie blue staining
Concentration:	>0.05 µg/µL as determined by microplate BCA method
Labeling Method:	Labeled with [U- ¹³ C ₆ , ¹⁵ N ₄]-L-Arginine and [U- ¹³ C ₆ , ¹⁵ N ₂]-L-Lysine
Buffer:	25 mM Tris-HCl, 100 mM glycine, pH 7.3
Storage:	Store at -80°C. Avoid repeated freeze-thaw cycles.
Stability:	Stable for 3 months from receipt of products under proper storage and handling conditions.
RefSeq:	NP_689626
RefSeq Size:	1390
RefSeq ORF:	1263
Locus ID:	137362

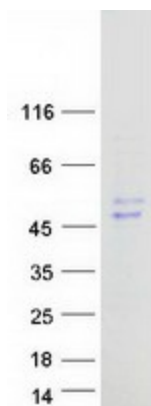


[View online »](#)

UniProt ID: [Q8NHS2](#)

Cytogenetics: 8p11.23

Product images:



Coomassie blue staining of purified GOT1L1 protein (Cat# [TP306121]). The protein was produced from HEK293T cells transfected with GOT1L1 cDNA clone (Cat# [RC206121]) using MegaTran 2.0 (Cat# [TT210002]).