

Product datasheet for PH306117

PIWIL4 (NM_152431) Human Mass Spec Standard

Product data:

Product Type:	Mass Spec Standards
Description:	PIWIL4 MS Standard C13 and N15-labeled recombinant protein (NP_689644)
Species:	Human
Expression Host:	HEK293
Expression cDNA Clone or AA Sequence:	RC206117
Predicted MW:	96.6 kDa
Protein Sequence:	>RC206117 protein sequence Red=Cloning site Green=Tags(s)

MSGRRARVKARGIARSPSATEVGRIQASPLPRSVLDSNNEASSSNGFLGTSRISTNDKYGISSGDAGSTFM
ERGVKNKQDFMDLSICTREKLAHVRNCKTGSSGIPVKLVTNLFNLDQDWQLYQYHVITYIPDLASRRLR
IALLYSHSELSNKAKAFDGAIFLSQKLEEKVTELSSETQRGETIKMTITLKRELPSSSPVCIQVFNIIIF
RKILKKLSMYQIGRNFYNPSEPMEIPQHKLSLWPGFAISVSYFERKLLFSADVSYKVLNRNETVLEFMTAL
CQRTGLSCFTQTCEKQLIGLIVLTRYNNRTYSIDDDWSVKPTHTFQKRDGTEITYVDYKQYDITVSD
LNQPMLVSLKKKRNDNSEAQLAHLIPELCLTGLTDQATSDFQLMKAVAEKTRLSPSGRQQLARLVDN
IQRNTNARFELETWGLHFGSQISLTGRIVPSEKILMQDHCQPVAADWSKDIRTCKILNAQSLNTWLIL
CSDRTEYVAESFLNCLRRVAGSMGFNVDPKIIKIQENPAAFVRAIQYVDPDVQLVMCILPSNQKTYD
SIKKYLSSDCPVPSQCVLARTLNKQGMMSIATKIAMQMTCKLGGELWAVEIPLKSLMVVGIDVCKDALS
KDVMMVGCVASVNPRI TRWFSRCILQRTMTDVADCLKVFMTGALNKWYKYNHDLPARIIYVRAGVGDGQL
KTLIEYEVPLLSSVAESSSNTSSRLSVIVVRKCKMPRFFTEMNRTVQNPPLGTVDSEATRNEWYDFYL
ISQVACRGTVSPTYYNVIYDDNGLKPDHMQRLETKLCHLYYNWPGIVSVAPACQYAHKLTFLVAQSIHKE
PSLELANHLFYL

TRTRPLEQKLI SEEDLAANDILDYKDDDDKV

Tag:	C-Myc/DDK
Purity:	> 80% as determined by SDS-PAGE and Coomassie blue staining
Concentration:	>0.05 µg/µL as determined by microplate BCA method
Labeling Method:	Labeled with [U- ¹³ C ₆ , ¹⁵ N ₄]-L-Arginine and [U- ¹³ C ₆ , ¹⁵ N ₂]-L-Lysine
Buffer:	25 mM Tris-HCl, 100 mM glycine, pH 7.3
Storage:	Store at -80°C. Avoid repeated freeze-thaw cycles.
Stability:	Stable for 3 months from receipt of products under proper storage and handling conditions.



[View online »](#)

RefSeq: [NP_689644](#)

RefSeq Size: 3214

RefSeq ORF: 2556

Synonyms: HIWI2; MIWI2

Locus ID: 143689

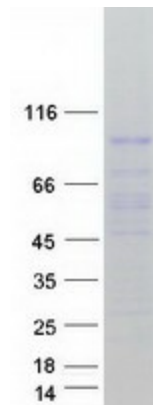
UniProt ID: [Q7Z3Z4](#), [A0A140VKG8](#)

Cytogenetics: 11q21

Summary: PIWIL4 belongs to the Argonaute family of proteins, which function in development and maintenance of germline stem cells (Sasaki et al., 2003 [PubMed 12906857]).[supplied by OMIM, Mar 2008]

Protein Pathways: Dorso-ventral axis formation

Product images:



Coomassie blue staining of purified PIWIL4 protein (Cat# [TP306117]). The protein was produced from HEK293T cells transfected with PIWIL4 cDNA clone (Cat# [RC206117]) using MegaTran 2.0 (Cat# [TT210002]).