

Product datasheet for PH306099

GTSF1 (NM_144594) Human Mass Spec Standard

Product data:

Product Type:	Mass Spec Standards
Description:	GTSF1 MS Standard C13 and N15-labeled recombinant protein (NP_653195)
Species:	Human
Expression Host:	HEK293
Expression cDNA Clone or AA Sequence:	RC206099
Predicted MW:	19.2 kDa
Protein Sequence:	>RC206099 protein sequence Red=Cloning site Green=Tags(s) MEETYTDSLDPKLLQCPYDKNHQIRACRFPYHLIKCRKNHPDVASKLATCPFNARHQVPRAEISHHISS CDDRSCIEQDVVNQTRSLRQETLAESTWQCPCDEDWDKDLWEQTSTPFAWGTTTHYSDNNSPASNIIVTEH KNNLASGMRVPKSLPYVLPWKNNNGNAQ TRTRPLEQKLI SEEDLAANDILDYKDDDDKV
Tag:	C-Myc/DDK
Purity:	> 80% as determined by SDS-PAGE and Coomassie blue staining
Concentration:	>0.05 µg/µL as determined by microplate BCA method
Labeling Method:	Labeled with [U- ¹³ C ₆ , ¹⁵ N ₄]-L-Arginine and [U- ¹³ C ₆ , ¹⁵ N ₂]-L-Lysine
Buffer:	25 mM Tris-HCl, 100 mM glycine, pH 7.3
Storage:	Store at -80°C. Avoid repeated freeze-thaw cycles.
Stability:	Stable for 3 months from receipt of products under proper storage and handling conditions.
RefSeq:	NP_653195
RefSeq Size:	822
RefSeq ORF:	501
Synonyms:	Cue110; FAM112B
Locus ID:	121355
UniProt ID:	Q8WW33 , A0A024RB57

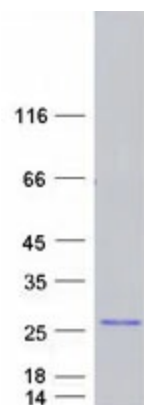


[View online »](#)

Cytogenetics: 12q13.13

Summary: Required for spermatogenesis and is involved in the suppression of retrotransposon transcription in male germ cells.[UniProtKB/Swiss-Prot Function]

Product images:



Coomassie blue staining of purified GTSF1 protein (Cat# [TP306099]). The protein was produced from HEK293T cells transfected with GTSF1 cDNA clone (Cat# [RC206099]) using MegaTran 2.0 (Cat# [TT210002]).