

## Product datasheet for PH306072

### SCCPDH (NM\_016002) Human Mass Spec Standard

#### Product data:

Product Type:	Mass Spec Standards
Description:	SCCPDH MS Standard C13 and N15-labeled recombinant protein (NP_057086)
Species:	Human
Expression Host:	HEK293
Expression cDNA Clone or AA Sequence:	RC206072
Predicted MW:	47.2 kDa
Protein Sequence:	>RC206072 protein sequence Red=Cloning site Green=Tags(s)

MATEQRPFHLLVFGASGFTGQFVTEEVAREQVDPERSRLLPWAVAGRSREKLQRVLEKAALKLGRPTLSS  
EVGIIICDIANPASLDEMAKQATVVLNCGPYRFYGEPIKACIENGASCIDISGEPQFLELMQLKYHEK  
AADKGVYIIGSSGFDSIPADLGVYTRNKMNGTLTAVESFLTIIHSGEGLSIHDGTWKSAYIFGDDQSNL  
RKLNRVSNLKPVPLIGPKLRRWPIISYCRELKGYSIPFMGSDVSVVRRQTQRYLYENLEESPVQYAAAYVTV  
GGITSVIKLMFAGLFFLVRFVIGRQLLIKFPWFFSFGYFSKQGPTQKQIDAASFTLFFGQGYSRGTG  
TDKNKPNIKICTQVKGPEAGYVATPIAMVQAAMTLLSDASHLPKAGGVFTPGAASFSTKTLIDRLNKHGIE  
FSVSSSEV

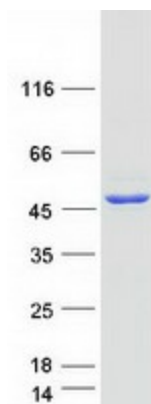
TRTRPLEQKLISEEDLAANDILDYKDDDDKV

Tag:	C-Myc/DDK
Purity:	> 80% as determined by SDS-PAGE and Coomassie blue staining
Concentration:	>0.05 µg/µL as determined by microplate BCA method
Labeling Method:	Labeled with [U- <sup>13</sup> C <sub>6</sub> , <sup>15</sup> N <sub>4</sub> ]-L-Arginine and [U- <sup>13</sup> C <sub>6</sub> , <sup>15</sup> N <sub>2</sub> ]-L-Lysine
Buffer:	25 mM Tris-HCl, 100 mM glycine, pH 7.3
Storage:	Store at -80°C. Avoid repeated freeze-thaw cycles.
Stability:	Stable for 3 months from receipt of products under proper storage and handling conditions.
RefSeq:	<a href="#">NP_057086</a>
RefSeq Size:	2482
RefSeq ORF:	1287
Synonyms:	CGI-49; NET11



[View online »](#)

Locus ID: 51097  
UniProt ID: [Q8NBX0](#), [A0A384NPM7](#)  
Cytogenetics: 1q44  
Protein Families: Transmembrane

**Product images:**

Coomassie blue staining of purified SCCPDH protein (Cat# [TP306072]). The protein was produced from HEK293T cells transfected with SCCPDH cDNA clone (Cat# [RC206072]) using MegaTran 2.0 (Cat# [TT210002]).