

## Product datasheet for PH306071

### RO60 (NM\_001042370) Human Mass Spec Standard

#### Product data:

Product Type:	Mass Spec Standards
Description:	TROVE2 MS Standard C13 and N15-labeled recombinant protein (NP_001035829)
Species:	Human
Expression Host:	HEK293
Expression cDNA Clone or AA Sequence:	RC206071
Predicted MW:	60.7 kDa
Protein Sequence:	>RC206071 protein sequence Red=Cloning site Green=Tags(s)

MEESVNQMQLNEKQIANSQDGYVWQVTDNRLHRFLCFGSEGGTYIYKEQKLGLENAEALIRLIEDGRG  
CEVIQEIKSFSQEGRTTKQEPMLFALAIQCSQSDISTKQAAFKAIVSEVCRIPHLFTFIQFKKDLKESMK  
CGMWGRALRKAADWYNEKGGMALALAVTKYKQRNGWSHKDLLRLSHLKPSSSEGLAIVTKYITKGWKEVH  
ELYKEKALSVETEKLLKYLEAVEKVKRTRDELEVIHLIEEHRLVREHLLTNHLKSKEVWKALLQEMPLTA  
LLRNLGKMTANSVLEPGNSEVSLVCEKLCNEKLLKKARIHPFHILIALETYKTGHGLRGKLRPDEEIL  
KALDAAFYKTFKTVEPTGKRFLAVDVSASMNQRVLGSLNASTVAAAMCMVVTRTEKDSYVVAFSDEM  
PCPVTTDMTLQQVLMAMSQIPAGGTDCSLPMIWAQKTNTPADVFIVFTDNETFAGGVHPAIALREYRKKM  
DIPAKLIVCGMTSNGFTIADPDDRGMLDMCGFDTGALDVIRNFTLDMI

TRTRPLEQKLISEEDLAANDILDYKDDDDKV

Tag:	C-Myc/DDK
Purity:	> 80% as determined by SDS-PAGE and Coomassie blue staining
Concentration:	>0.05 µg/µL as determined by microplate BCA method
Labeling Method:	Labeled with [U- 13C6, 15N4]-L-Arginine and [U- 13C6, 15N2]-L-Lysine
Buffer:	25 mM Tris-HCl, 100 mM glycine, pH 7.3
Storage:	Store at -80°C. Avoid repeated freeze-thaw cycles.
Stability:	Stable for 3 months from receipt of products under proper storage and handling conditions.
RefSeq:	<u><a href="#">NP_001035829</a></u>
RefSeq Size:	2091
RefSeq ORF:	1617



[View online »](#)

**Synonyms:** RORN; SSA2; TROVE2

**Locus ID:** 6738

**UniProt ID:** [P10155](#)

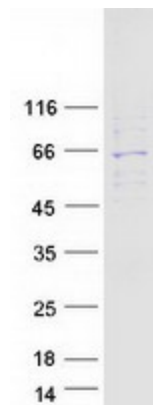
**Cytogenetics:** 1q31.2

**Summary:** RNA-binding protein that binds to misfolded non-coding RNAs, pre-5S rRNA, and several small cytoplasmic RNA molecules known as Y RNAs. May stabilize some of these RNAs and protect them from degradation (PubMed:18056422). Binds to endogenous Alu retroelements which are induced by type I interferon and stimulate proinflammatory cytokine secretion. Regulates the expression of Alu retroelements as well as inflammatory genes (PubMed:26382853).[UniProtKB/Swiss-Prot Function]

**Protein Families:** Transcription Factors

**Protein Pathways:** Systemic lupus erythematosus

### Product images:



Coomassie blue staining of purified RO60 protein (Cat# [TP306071]). The protein was produced from HEK293T cells transfected with RO60 cDNA clone (Cat# [RC206071]) using MegaTran 2.0 (Cat# [TT210002]).