

Product datasheet for PH306070

KCTD17 (NM_024681) Human Mass Spec Standard

Product data:

Product Type:	Mass Spec Standards
Description:	KCTD17 MS Standard C13 and N15-labeled recombinant protein (NP_078957)
Species:	Human
Expression Host:	HEK293
Expression cDNA Clone or AA Sequence:	RC206070
Predicted MW:	32.5 kDa
Protein Sequence:	>RC206070 protein sequence Red=Cloning site Green=Tags(s)

MRMEAGEAAPPAGAGGRAAGGWGKVVRLNVGGTVFLTTRQTLCREQKSFLSRLCQGEELQSDRDETAYL
IDRDPTYFGPIILNFLRHGKLVLDKDMAEEGVLEEAFFYNIIGPLIRIIKDRMEEKDYTVTQVPPKHVYRVL
QCQEEELTQMVSTMSDGRFEQLVNIIGSSYNYGSEDQAEFLCVVSKELHSTPNGLSSESSRKTSTEEQL
EEQQQEEVEVEVEVQVQVEADAQEKGRPHPLRPEAELAVRASPRPLARPQSCHPCCYKPEAPGCEAP
DHLQGLGVPI

TRTRPLEQKLISEEDLAANDILDYKDDDDKV

Tag:	C-Myc/DDK
Purity:	> 80% as determined by SDS-PAGE and Coomassie blue staining
Concentration:	>0.05 µg/µL as determined by microplate BCA method
Labeling Method:	Labeled with [U- ¹³ C ₆ , ¹⁵ N ₄]-L-Arginine and [U- ¹³ C ₆ , ¹⁵ N ₂]-L-Lysine
Buffer:	25 mM Tris-HCl, 100 mM glycine, pH 7.3
Storage:	Store at -80°C. Avoid repeated freeze-thaw cycles.
Stability:	Stable for 3 months from receipt of products under proper storage and handling conditions.
RefSeq:	<u>NP_078957</u>
RefSeq Size:	1707
RefSeq ORF:	870
Locus ID:	79734
UniProt ID:	<u>Q8N5Z5</u>



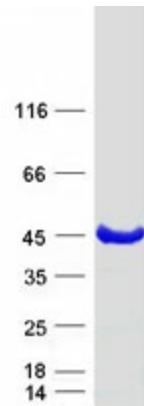
[View online »](#)

Cytogenetics: 22q12.3

Summary: This gene encodes a protein that belongs to a conserved family of potassium channel tetramerization domain (KCTD)-containing proteins. The encoded protein functions in ciliogenesis by acting as a substrate adaptor for the cullin3-based ubiquitin-conjugating enzyme E3 ligase, and targets trichoplein, a keratin-binding protein, for degradation via polyubiquitylation. A mutation in this gene is associated with autosomal dominant myoclonic dystonia 26. [provided by RefSeq, Nov 2016]

Protein Families: Ion Channels: Other

Product images:



Coomassie blue staining of purified KCTD17 protein (Cat# [TP306070]). The protein was produced from HEK293T cells transfected with KCTD17 cDNA clone (Cat# [RC206070]) using MegaTran 2.0 (Cat# [TT210002]).