

## Product datasheet for PH306018

### TPTE (NM\_199259) Human Mass Spec Standard

#### Product data:

Product Type:	Mass Spec Standards
Description:	TPTE MS Standard C13 and N15-labeled recombinant protein (NP_954868)
Species:	Human
Expression Host:	HEK293
Expression cDNA Clone or AA Sequence:	RC206018
Predicted MW:	62.4 kDa
Protein Sequence:	>RC206018 protein sequence Red=Cloning site Green=Tags(s)
	MNESPDPTDLAGVIEELGPNDSPQTSEFKGATEEAPAKESVLRARLSKFEVEDAENVASYDSKIKKIVHSI VSSFAFGLFGVFLVLLDVTILADLIFTDSKLYIPLEYRSISLAIALFFLMDVLLRVFVERRQQYFSDLF NILDTAIIIVILLVDDVYIFFDIKLLRNIPRWTLLRLLRLIILLRIFHLFHQKRQLEKLRIRRVSENKR RYTRDGFDLDTYVTERIIAMSPSSGRQSFYRNPIKEVVRFLDKKHRNHRYVYNLCSERAYDPKHFNHR VVRIMIDDHNVTLHQMVVFTKEVNEWMAQDLENIVAIHCKGGTDRGTGMVCAFLIASEICSTAKESLYY FGERRTDKTHSEKFQGVETPSQKRYVAYFAQVKHLYNWNLP RRILFIKHFIIYSIPRYVRDLKIQIEME KKVVFSTISLGKCSVLDNITTDKILIDVFDGPPLYDDVKVQFFYSNLPTYDNCSEFYFWLHTSFIENNRL YLPKNELDNLHKQKARRIYPSDFAVEILFGEKMTSSD VVAGSD
	TRTRPLEQKLI SEEDLAANDILDYKDDDDKV
Tag:	C-Myc/DDK
Purity:	> 80% as determined by SDS-PAGE and Coomassie blue staining
Concentration:	>0.05 µg/µL as determined by microplate BCA method
Labeling Method:	Labeled with [U- 13C6, 15N4]-L-Arginine and [U- 13C6, 15N2]-L-Lysine
Buffer:	25 mM Tris-HCl, 100 mM glycine, pH 7.3
Storage:	Store at -80°C. Avoid repeated freeze-thaw cycles.
Stability:	Stable for 3 months from receipt of products under proper storage and handling conditions.
RefSeq:	<u>NP_954868</u>
RefSeq Size:	2711
RefSeq ORF:	1599



[View online »](#)

Synonyms: CT44; PTEN2

Locus ID: 7179

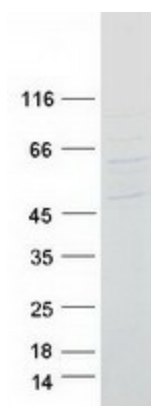
UniProt ID: [P56180](#)

Cytogenetics: 21p11.2

Summary: This gene encodes a PTEN-related tyrosine phosphatase which may play a role in the signal transduction pathways of the endocrine or spermatogenic function of the testis. Alternative splicing results in multiple transcript variants. [provided by RefSeq, Mar 2014]

Protein Families: Druggable Genome, Transmembrane

### Product images:



Coomassie blue staining of purified TPTE protein (Cat# [TP306018]). The protein was produced from HEK293T cells transfected with TPTE cDNA clone (Cat# [RC206018]) using MegaTran 2.0 (Cat# [TT210002]).