

Product datasheet for PH306001

SERINC1 (NM_020755) Human Mass Spec Standard

Product data:

Product Type:	Mass Spec Standards
Description:	SERINC1 MS Standard C13 and N15-labeled recombinant protein (NP_065806)
Species:	Human
Expression Host:	HEK293
Expression cDNA Clone or AA Sequence:	RC206001
Predicted MW:	50.5 kDa
Protein Sequence:	>RC206001 protein sequence Red=Cloning site Green=Tags(s)

MGSVLGLCSMASWIPCLCGSAPCLLCRCCPSGNNSTVTRLIYALFLLVGVCVACVMLIPGMEEQLNKIPG
FCENEGVVPNCNILVGYKAVYRLCFGLAMFYLLSLLMIKVKSSSDPRAAVHNGFWFFKFAAAIAIIGA
FFIPEGFTFTTVWFYVGMAGAFCFILIQVLVLLIDFAHSWNEVVEKMEEGNSRCWYAALLSATALNYLLSL
VAIVLFFVYVYTHPASCSENKAFISVNMLLCVGASVMSILPKIQESQPRGGLQSSVITVYTMYL TWSAMT
NEPETNCNPSLLSIIGYNTTSTVPKEGQSVQWWHAQGIIGLILFLLCVFYSSIRTSNNSQVNKLTLTSD
STLIEDGGARSDGSLGDDVHRAVDNERDGVTSYSFFHMLFLASLYIMM TL TNWRYEPSREMKSQW
TAVVWKISSWIGIVLYVWTLVAPLVL TNRDFD

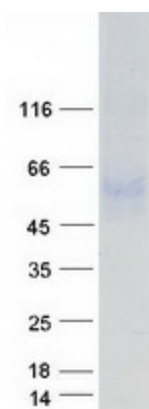
TRTRPLEQKLI SEEDLAANDILDYKDDDDKV

Tag:	C-Myc/DDK
Purity:	> 80% as determined by SDS-PAGE and Coomassie blue staining
Concentration:	>0.05 µg/µL as determined by microplate BCA method
Labeling Method:	Labeled with [U- ¹³ C ₆ , ¹⁵ N ₄]-L-Arginine and [U- ¹³ C ₆ , ¹⁵ N ₂]-L-Lysine
Buffer:	25 mM Tris-HCl, 100 mM glycine, pH 7.3
Storage:	Store at -80°C. Avoid repeated freeze-thaw cycles.
Stability:	Stable for 3 months from receipt of products under proper storage and handling conditions.
RefSeq:	<u>NP_065806</u>
RefSeq Size:	3144
RefSeq ORF:	1359
Synonyms:	TDE1L; TDE2; TMS-2; TMS2



[View online »](#)

Locus ID:	57515
UniProt ID:	Q9NRX5
Cytogenetics:	6q22.31
Summary:	Enhances the incorporation of serine into phosphatidylserine and sphingolipids. [UniProtKB/Swiss-Prot Function]
Protein Families:	Transmembrane

Product images:

Coomassie blue staining of purified SERINC1 protein (Cat# [TP306001]). The protein was produced from HEK293T cells transfected with SERINC1 cDNA clone (Cat# [RC206001]) using MegaTran 2.0 (Cat# [TT210002]).